

# OPEN CLASS ANIMAL EXHIBITS

## DEPARTMENT 17 - DRAFT HORSE SHOW CONTINUED

### DEPARTMENT RULES CONTINUED:

- Infraction of the rules directed by the Superintendent may result in dismissal of exhibitor and animal from the Fairgrounds with all premiums being forfeited.
- Hitch class scoring is as follows: 20% neatness and cleanliness of wagon, drive, and equipment; 20% quality and uniformity of color and size of team; 60% manner, performance of team, and ability of drive.
- Prize Scale 1st= 40%, 2nd= 30%, 3rd=20%, and 4th=10%.
- Draft Horse Show Manager reserves the right to cancel, combine or add classes as needed.

### SECTION 1: DRAFT HORSE CLASSES

1. Showmanship 19 & Under
2. Halter Draft Mares All Ages
3. Halter Draft Geldings All Ages
4. Walk/Trot Under Saddle
5. English Pleasure W/T/C
6. Western Pleasure W/T/C
7. Draft Barrel Racing
8. Single Mini Cart Under 38"
9. Single Pony Cart 39-56"
10. Single Horse Cart
11. Single Draft Cart
12. Youth Cart - 19 years old & younger with accompanying adult.
13. Just Having Fun cart class, for participants of the Just Having Fun Driving Clinics
14. Mini Team Hitch
15. Donkey Team Hitch
16. Horse Team Hitch
17. Draft Team Hitch
18. Youth Team Hitch- Must be accompanied by an adult
19. Just Having Fun Team Class, for participants of the Just Having Fun Driving Clinics
20. Single Horse Wagon Placement
21. Team Wagon Placement
22. TBA
23. TBA
24. TBA
25. TBA
26. Log Pull – Single
27. Log Pull – Team

## DEPARTMENT 25 - LLAMAS/ALPACAS

*Superintendent - Ben Walker*

### DEPARTMENT RULES:

- Please be sure to read through all the general rules at the beginning of this book.
- Registrations must be submitted by July 1, 2024. Late registrations will not be accepted. No exceptions.
- The superintendent reserves the right to adjust or arrange classes as numbers see fit.
- Exhibitors must be 9 years or older. Age computed from January 1st of current year.
- Failure of handler to safely handle their animal will result in removal from class.
- Show attire neat, making sure not to draw undue attention to oneself with exception of costume class - ie, dress shirt/jeans/khaki or dress pants.
- Llamas/Alpacas will arrive by 2:00pm Saturday and will remain until 6:00am the following Sunday.
- Handlers will only be allowed to enter each performance class, novice and advance once using different animals in each class.
- Performance class will require llamas/alpacas to do various obstacles. Handlers and animals will be judged on their ability to work together as well as completion of an obstacle. Advanced consists of an animal placing first in any prior show, otherwise considered Novice.
- AGE DIVISIONS: Juvenile- 5 months up to 13 months; Yearling- 13 months up to 24 months; Two Year Old- 24 months up to 36 months; Adult- 36 months & over.
- Female classes are for fertile, breeding females.
- Male classes are for intact/24 months or younger, by August 1st.
- Non-breeder classes are for geldings, vasectomized males, and spayed or non-reproductive females that are suitable for other purposes.
- Animals must be under the control of their owner at all times or they will be asked to remove the animal from the grounds for safety of the handler and public.
- Entries shall be removed and pens cleaned by 12pm on Sunday, August 11, 2024.
- PREMIUM: Exhibitors will receive rosette ribbons for their appropriate placing of 1st through 6th places, unless otherwise specified. 1st place recipient will receive a premium of \$10.00.

### SECTION 1: LLAMAS/ALPACAS CLASSES

*Exhibitors placed 1st-6th in each class awarded rosette ribbons.*

1. Showmanship - Junior (9-13 years old)
2. Showmanship - Intermediate (14-18 years old)
3. Showmanship - Adult (19 years & older)
4. Grand /Reserve Showmanship - *Exhibitors are determined by the judge (1st & 2nd places winners from each class in this section compete). You do not need to register for this class. Rosette awarded to winner.*

# OPEN CLASS ANIMAL EXHIBITS

## **SECTION 2: OBSTACLE COURSE**

*Exhibitors placed 1st-6th in each class awarded rosette ribbons.*

1. Obstacle Course - Advanced Animal
2. Obstacle Course - Novice Animal
3. Grand /Reserve Obstacle Course - *Exhibitors are determined by the judge (1st & 2nd places winners from each class in this section compete). You do not need to register for this class. Rosette awarded to winner.*

## **SECTION 3: COSTUME CLASS**

*Exhibitors placed 1st-6th in each class awarded rosette ribbons.*

1. Costume- Adult (19 & over)

## **SECTION 4: PACK CLASSES**

*Exhibitors placed 1st-6th in each class awarded rosette ribbons.*

1. Pack - Advanced Animal
2. Pack - Novice Animal
3. Grand & Reserve Pack - *Exhibitors are determined by the judge (1st & 2nd places winners from each class in this section compete). You do not need to register for this class. Rosette awarded to winner.*

## **LLAMA HALTER CLASSES**

## **SECTION 5: LIGHT WOOL FEMALE**

*Exhibitors placed 1st-6th in each class awarded ribbons.*

1. Juvenile
2. Yearling
3. Adult 24 Month & Older

## **SECTION 6: MEDIUM WOOL FEMALE**

*Exhibitors placed 1st-6th in each class awarded ribbons.*

1. Juvenile
2. Yearling
3. Adult 24 Month & Older

## **SECTION 7: HEAVY WOOL FEMALE**

*Exhibitors placed 1st-6th in each class awarded ribbons.*

1. Juvenile
2. Yearling
3. Adult 24 Month & Older
4. Grand & Reserve Wool Female - *Exhibitors are determined by the judge (1st & 2nd places winners from each class in this section compete). You do not need to register for this class. Rosette awarded to winner.*

## **SECTION 8: LIGHT WOOL MALE**

*Exhibitors placed 1st-6th in each class awarded ribbons.*

1. Juvenile
2. Yearling
3. Adult 24 Month & Older

## **SECTION 9: MEDIUM WOOL MALE**

*Exhibitors placed 1st-6th in each class awarded ribbons.*

1. Juvenile
2. Yearling
3. Adult 24 Month & Older

## **SECTION 10: HEAVY WOOL MALE**

*Exhibitors placed 1st-6th in each class awarded ribbons.*

1. Juvenile
2. Yearling
3. Adult 24 Month & Older
4. Grand & Reserve Wool Male - *Exhibitors are determined by the judge (1st & 2nd places winners from each class in this section compete). You do not need to register for this class. Rosette awarded to winner.*

## **SECTION 11: NON - BREEDER**

*Exhibitors placed 1st-6th in each class awarded ribbons.*

1. Yearling
2. Adult 24 Months & Older

## **SECTION 12: HUACAYA FEMALE**

*Exhibitors placed 1st-6th in each class awarded ribbons.*

1. Juvenile
2. Yearling
3. Adult 24 Month & Older
4. Grand & Reserve Huacaya Female - *Exhibitors are determined by the judge (1st & 2nd places winners from each class in this section compete). You do not need to register for this class. Rosette awarded to winner.*

## **SECTION 13: HUACAYA MALE**

*Exhibitors placed 1st-6th in each class awarded ribbons.*

1. Juvenile
2. Yearling
3. Adult 24 Month & Older
4. Grand & Reserve Huacaya Male - *Exhibitors are determined by the judge (1st & 2nd places winners from each class in this section compete). You do not need to register for this class. Rosette awarded to winner.*

## **SECTION 14: HUACAYA NON-BREEDER**

*Exhibitors placed 1st-6th in each class awarded ribbons.*

1. Yearling
2. Adult 24 Months & Older

## **SECTION 15: SURI FEMALE**

*Exhibitors placed 1st-6th in each class awarded ribbons.*

1. Juvenile
2. Yearling
3. Adult 24 Month & Older
4. Grand & Reserve Suri Female - *Exhibitors are determined by the judge (1st & 2nd places winners from each class in this section compete). You do not need to register for this class. Rosette awarded to winner.*

# OPEN CLASS ANIMAL EXHIBITS

## DEPARTMENT 25 - CONTINUED

### ALPACAS HALTER CLASSES

#### SECTION 16: SURI MALE

*Exhibitors placed 1st-6th in each class awarded ribbons.*

1. Juvenile
2. Yearling
3. Adult 24 Month & Older
4. Grand & Reserve Suri Female - *Exhibitors are determined by the judge (1st & 2nd places winners from each class in this section compete). You do not need to register for this class. Rosette awarded to winner.*

#### SECTION 17: SURI NON-BREEDER

*Exhibitors placed 1st-6th in each class awarded ribbons.*

1. Yearling
2. Adult 24 Months & Older

## DEPARTMENT 100 - OPEN HORSE PULL

*Superintendent- Erika Sprenger*

#### DEPARTMENT RULES:

MI Horse Pulling Association Rules & Regulations Apply

- PREMIUMS:

1st - \$330	2nd - \$275	3rd - \$250
4th - \$225	5th - \$200	6th - \$190
7th - \$180	8th - \$170	9th - \$160
10th - \$150		

#### SECTION 1:

1. Open Pull Team



**PROUD SPONSOR  
OF THE  
NORTHWESTERN  
MICHIGAN FAIR**

**NORTHWESTERN  
MICHIGAN  
FAIR**

---

**OPEN CLASS  
Non-Animal  
Exhibits**

Registration Deadline:  
JULY 14TH, 2024

# OPEN CLASS NON-ANIMAL EXHIBITS

## PLEASE BE SURE YOU HAVE READ THROUGH ALL THE GENERAL RULES

### EVELYN HEIM BUILDING

#### Home Economics & Art

*Evelyn Heim Building Superintendent:  
Clarissa Johnston  
Assistant: Laurie Ashley*

#### PROGRAM RULES:

- **Bring your open exhibits to the Evelyn Heim Building Saturday, August 3, 2024 between 10am to 2pm. Pick up your entry stickers at the fair office before coming to the building.**
- All articles must be the work of the exhibitor and must have been made since the previous year's Fair.
- Only one entry per exhibitor.
- Exhibitors are encouraged to attach a 3x5 card with interesting information about their entry.
- Please read Department Rules for Antiques, Needlework, Arts and Crafts, Culinary Arts, Food Preservation, Photography and Junior/Youth Skills to learn how to exhibit your items properly.
- Judging: all entries will be judged at the beginning of the Fair on Saturday afternoon and all day Sunday. The building is not open to the public at these times.
- Items should appear clean, unworn, and orderly. Each article must be neat and orderly. Items that do not meet department requirements will not be judged. Entries will be evaluated on craftsmanship and quality: general appearance, workmanship and difficulty.
- If exhibitor's name is visible, it must be covered during judging.
- Premiums: 1st, 2nd, and 3rd place ribbons are awarded. Sweepstakes ribbons are awarded in each department at the judges' discretion.
- **HOMEMAKER OF THE YEAR and JUNIOR HOMEMAKER OF THE YEAR** rules and application form are located at the back of the book or online.
- During Fair Week, the Evelyn Heim Building is open to the public Monday through Saturday 10am to 9pm. There are a variety of demonstration and hands on projects throughout the week. View the Fair website under schedule for more information

#### PROGRAM RULES CONTINUED:

- Exhibits may be removed Sunday, August 11, 2024 from 8:00-11:00am. Antiques and Heirloom exhibits may only be removed on Sunday, August 11, 2024 from 8:00-11:00am. No exceptions.

#### DEPARTMENT 40 -

#### NEEDLEWORK

*Superintendent - Rebecca Eitzen*

#### DEPARTMENT RULES

- Limit of one entry per class for each exhibitor.
- Special attention will be given to cleanliness, neatness, and workmanship.
- Articles must have been made within the last two years.
- Articles to be exhibited should be folded to show the work to the best advantage. Pictures must be framed and wired for hanging.
- If exhibitor's name is visible, it must be covered during judging.
- Wall hangings defined as not intended for bed.
- **PREMIUM:** Exhibitors will receive ribbons for their appropriate placing of 1st through 3rd places, unless otherwise specified. 1st place recipient will receive a premium of \$3.00.

#### SECTION 1: QUILT CLASSES

*Exhibitors placed 1st-3rd awarded ribbons.  
Entries in Class 13, 14, 15, 16, and 17 the quilting must be the work of the exhibitor:*

1. Wall Hangings
2. Wall Hangings, Fiber Art
3. Quilt, Miniature, 18" & under
4. Quilt, Pieced
5. Quilt, Hand embroidered
6. Quilt, Machine embroidered
7. Quilt, Appliquéd by hand
8. Quilt, Appliquéd by machine
9. Quilt, Baby
10. Quilt, Crazy
11. Quilt, Modern
12. Quilt, Whole cloth
13. Quilt, Hand Quilted
14. Quilt, Domestic sewing machine quilted
15. Quilt, Long arm machine, quilted, free motion (free hand)
16. Quilt, Long arm machine computer quilted
17. Quilt, Tied
18. Quilt, Other identify

#### SECTION 2: QUILTED WEARABLE CLASSES

*Exhibitors placed 1st-3rd awarded ribbons*

1. Quilted Jacket
2. Quilted Purse/bag
3. Quilted, Other identify

#### SECTION 3: QUILTED HOUSE- HOLD ITEMS CLASSES

*Exhibitors placed 1st-3rd awarded ribbons*

1. Quilted Pillow
2. Quilted Pot Holders (2)
3. Quilted Placemats (2)
4. Quilted Mug Rug
5. Quilted Table Runners
6. Quilted, Other identify

#### SECTION 4: EMBROIDERY CLASSES

*Exhibitors placed 1st-3rd awarded ribbons*

1. Candle Wicking
2. Clothing
3. Crewel Work
4. Household
5. Machine Embroidery (free hand) Domestic Machine
6. Machine Embroidery (freehand) Long Arm Machine
7. Punch Embroidery
8. Hardanger
9. Ribbon
10. Sampler
11. Smocking
12. Drawnwork or cutwork
13. Other Embroidery Item, identify

#### SECTION 5: COUNTED CROSS STITCH CLASSES

*Exhibitors placed 1st-3rd awarded ribbons*

1. Clothing item
2. Household Item
3. Sampler
4. Other Cross Stitch Item, identify

#### SECTION 6: COUNTED CROSS STITCH CLASSES

*Exhibitors placed 1st-3rd awarded ribbons*

1. Holiday item
2. Mounted, 8x10 or less (Does not include mat or frame)
3. Mounted, 10x12 (Does not include mat or frame)
4. Mounted, 12x14 (Does not include mat or frame)
5. Household item
6. Other Counted Cross Stitch Item, identify

# OPEN CLASS NON-ANIMAL EXHIBITS

## SECTION 7: NEEDLEPOINT CLASSES

*Exhibitors placed 1st-3rd awarded ribbons*

1. Household item
2. Picture
3. Pillow
4. Sampler
5. Other Needlepoint Item, identify

## SECTION 8: PLASTIC CANVAS CLASSES

*Exhibitors placed 1st-3rd awarded ribbons*

1. Holiday item
2. Household item
3. Toy
4. Other Plastic Canvas item, identify

## SECTION 9: AFGAN CLASSES

*Exhibitors placed 1st-3rd awarded ribbons*

1. Baby/Child Afghan
2. Crochet
3. Granny Square
4. Knit
5. Woven
6. Other Standard Size Afghan, identify

## SECTION 10: KNIT CLASSES

*Exhibitors placed 1st-3rd awarded ribbons*

1. Cape, Shawl, Stole, or Poncho
2. Cardigan/Sweater
3. Doily
4. Felted, Knit item
5. Footwear
6. Hat
7. Home Accessory
8. Machine Knit
9. Mittens/Gloves
10. Pillow
11. Scarf
12. Sweater, Bonnet, Booties Set
13. Other Knit Items, identify

## SECTION 11: CROCHET CLASSES

*Exhibitors placed 1st-3rd awarded ribbons*

14. Cape, Shawl, Stole, or Poncho
15. Cardigan/Sweater
16. Doily
17. Footwear
18. Hat
19. Home Accessory
20. Mittens/Gloves
21. Pillow
22. Scarf
23. Sweater, Bonnet, Booties Set
24. Other Crochet Item, identify

## SECTION 12: SEWING CLASSES

*Exhibitors placed 1st-3rd awarded ribbons*

1. Apron
2. Women's Apparel
3. Men's Apparel
4. Coat
5. Ensemble (2-3 piece outfits)
6. Home Accessory
7. Pajamas/Nightgown
8. Recyclable material, outfit/dress
9. Special Occasion Formal, Bride, Costume, etc.
10. Sportswear
11. Other Sewn Item, identify

## SECTION 13: TOY CLASSES

*Exhibitors placed 1st-3rd awarded ribbons*

1. Rag Doll
2. Stuffed Animal, Fabric
3. Stuffed Animal, Fur
4. Cloth Doll (Body and Clothes/ Handmade)
5. Doll (Handmade) and wardrobe, 3 outfits clothes knit, crochet, or sewn
6. Doll (Purchased) and wardrobe, 3 outfits clothes knit, crochet, or sewn
7. Porcelain head on appropriate body
8. Sock Doll
9. Other Doll, identify
10. Other Fabric Toy, identify

## SECTION 14: RUG CLASSES

*Exhibitors placed 1st-3rd awarded ribbons*

1. Braided
2. Crochet
3. Hooked
4. Woven
5. Other Rug, identify

## SECTION 15: KNOTTING CLASSES

*Exhibitors placed 1st-3rd awarded ribbons*

1. Bobbin Lace
2. Netting
3. Tatting
4. Victorial Crochet
5. Other Knotting, identify

## SECTION 16: SPINNING/WEAVING CLASSES

*Exhibitors placed 1st-3rd awarded ribbons*

6. Angora item
7. Blended item
8. Cotton item
9. Wool item
10. Woven Clothing item
11. Woven Household item
12. Other Woven item, identify

## DEPARTMENT 41 -

### CULINARY ARTS

*Superintendent -*

#### DEPARTMENT RULES:

- Limit of one entry per class for each exhibitor.
- Enclose all entries in appropriately sized and sealed plastic bag.
- Decorated cakes and frosted cakes must be wrapped in clear plastic wrap.
- Pies are to be enclosed in an appropriate Ziploc bag.
- Entries will remain on display until the conclusion of the fair at the end of the week. After judging a portion of pie, cake or bread can be left for display and rest of item taken for your use.
- No commercial mixes allowed, except decorated cake section. PREMIUM: Exhibitors will receive ribbons for their appropriate placing of 1st through 3rd places, unless otherwise specified. 1st place recipient will receive a premium of \$3.00.
- Sweepstakes Ribbons awarded at the discretion of judges.

#### SECTION 1: QUICK BREAD CLASSES

*Exhibitors placed 1st-3rd awarded ribbons*

1. Biscuits (3)
2. Coffee Cake
3. Corn Bread
4. Donuts (3)
5. Fruit Bread
6. Fruit Muffins (3)
7. Grain Muffins (3)
8. Nut Bread
9. Zucchini Bread
10. Other Quick Bread
11. Other Muffins (3)

#### SECTION 2: YEAST BREAD CLASSES

*Exhibitors placed 1st-3rd awarded ribbons*

1. Cheese Bread
2. Christmas Bread
3. Cinnamon Rolls (3)
4. Coffee Cake
5. Dinner Rolls (3)
6. French Bread
7. Oatmeal Bread
8. Raisin Bread
9. Rye Bread
10. White Bread
11. Whole Wheat
12. Other Yeast Bread, identify

# OPEN CLASS NON-ANIMAL EXHIBITS

## DEPARTMENT 41 -

### CULINARY ARTS

#### CONTINUED

##### SECTION 3: GLUTEN FREE CLASSES

*Exhibitors placed 1st-3rd awarded ribbons*

1. Quick Bread
2. Cake
3. Cookies (4)
4. Biscuits (3)
5. Brownies (4)
6. Other Gluten Free, Identify

##### SECTION 4: CAKE CLASSES

*Exhibitors placed 1st-3rd awarded ribbons*

1. Applesauce
2. Banana
3. Carrot
4. Chiffon
5. Chocolate
6. Cupcakes (4)
7. Fruit (Dried & Candied)
8. Gingerbread
9. Jellyroll
10. Pound
11. Spice
12. Upside Down
13. White
14. Other Cake, identify

##### SECTION 5: BAR COOKIE CLASSES

*Exhibit 4 per plate-prepared in pan, then cut into rectangular pieces.*

*Exhibitors placed 1st-3rd awarded ribbons*

1. Brownies
2. Fruit
3. Other Bar, identify

##### SECTION 6: DROP COOKIE CLASSES

*Exhibit 4 per plate-batter dropped from spoon onto baking sheet.*

*Exhibitors placed 1st-3rd awarded ribbons*

1. Chocolate
2. Chocolate Chip
3. Fruit
4. Ginger/Molasses
5. Oatmeal
6. Other Drop Cookie, identify

##### SECTION 7: ROLLED COOKIE CLASSES

*Exhibit 4 per plate-dough cut into shapes after rolling out.*

*Exhibitors placed 1st-3rd awarded ribbons*

1. Filled
2. Sugar
3. Other Rolled Cookie, identify

##### SECTION 8: REFRIGERATOR

###### COOKIE CLASSES

*Exhibit 4 per plate-dough formed into rolls, chilled, and sliced to bake.*

*Exhibitors placed 1st-3rd awarded ribbons*

1. Chocolate
2. Nut
3. Pinwheel
4. Other Refrigerator Cookie, identify

##### SECTION 9: SHAPED COOKIE CLASSES

*Exhibit 4 per plate-formed by hand, with fork or cookie press*

*Exhibitors placed 1st-3rd awarded ribbons*

1. Peanut Butter
2. Thumbprint
3. Gingersnap
4. Spritz
5. Other Shaped Cookie, identify

##### SECTION 10: DECORATED CAKE CLASSES

*Note: Mixes may be used for cakes.*

*Exhibitors placed 1st-3rd awarded ribbons*

1. Anniversary
2. Birthday
3. Holiday
4. Novelty
5. Wedding
6. Other Decorated Cake, identify

##### SECTION 11: DECORATED CONFECTIONS CLASSES

*Exhibitors placed 1st-3rd awarded ribbons*

1. Cupcakes (4)
2. Gingerbread House
3. Holiday Cookies (4)
4. Special Occasion Cookies (4)
5. Other Decorated Confections, identify

##### SECTION 12: CANDY & CONFECTIONS CLASSES

*Exhibitors placed 1st-3rd awarded ribbons*

1. Brittle (peanut, toffee, etc)
2. Caramels
3. Dipped
4. Fudge
5. Hard Candy
6. Maple Sugar
7. Peanut Butter
8. Toffee
9. Other Candy, identify

##### SECTION 13: PIE CLASSES

*Exhibitors placed 1st-3rd awarded ribbons*

1. Apple
2. Berry
3. Lemon
4. Nut
5. Pumpkin
6. Rhubarb
7. Other Pie, identify

##### SECTION 14: CHERRY PIE AWARD CLASS

*PREMIUMS: 1st - Commemorative Cutting Board*

1. Best Cherry Pie

## DEPARTMENT 80 -

### FOOD PRESERVATION

*Superintendent -*

#### DEPARTMENT RULES:

- Limit of one entry per class for each exhibitor.
- Food must be preserved in clean and clear jars. No color jars.
- Jars must be properly sealed following USDA guidelines. (Available on-line)
- Jars must be properly labeled with name of product and date processed.
- Dried fruits and vegetables must be properly labeled with name of product, date processed, and method of drying. Display in clear jar or clear plastic Ziplock bag.
- Canning lids and rings must be untarnished. The ring must be removable.
- All food must be processed after June 2023.
- PREMIUM: Exhibitors will receive ribbons for their appropriate placing of 1st through 3rd places, unless otherwise specified. 1st place recipient will receive a premium of \$3.00.
- Sweepstakes Ribbons awarded at the discretion of the judges.

# OPEN CLASS NON-ANIMAL EXHIBITS

## SECTION 1: CANNED FRUIT CLASSES

*Exhibitors placed 1st-3rd awarded ribbons*

1. Apple
2. Applesauce
3. Apricots
4. Blackberries
5. Blueberries
6. Fruit Cocktail
7. Grape Juice
8. Peaches
9. Pears
10. Plums
11. Raspberries (Red/Black)
12. Rhubarb
13. Sweet Cherries, Dark
14. Sweet Cherries, Light
15. Tart Cherries
16. Other Fruit, identify
17. Other Fruit Juice, identify

## SECTION 2: VEGETABLE CLASSES

*Exhibitors placed 1st-3rd awarded ribbons*

1. Asparagus
2. Beans, Green
3. Beans, Yellow
4. Beets
5. Carrots
6. Corn
7. Mixed Vegetables
8. Peas
9. Potatoes
10. Pumpkin
11. Sauerkraut
12. Succotash
13. Tomatoes
14. Tomato Juice
15. Other Vegetable, identify

## SECTION 3: MEAT CLASSES

*Exhibitors placed 1st-3rd awarded ribbons*

1. Beef
2. Chicken/Turkey
3. Fish
4. Hamburg
5. Pork
6. Venison
7. Other Canned Meat, identify

## SECTION 4: JAM CLASSES

*Exhibitors placed 1st-3rd awarded ribbons*

1. Apricot
2. Blackberry
3. Blueberry
4. Cherry
5. Marmalade
6. Peach
7. Pear
8. Plum
9. Raspberry, red
10. Raspberry, black
11. Rhubarb
12. Strawberry
13. Strawberry-Rhubarb
14. Other Jam, identify (*Maybe a combination of two or more fruit*)

## SECTION 5: JELLY CLASSES

*Exhibitors placed 1st-3rd awarded ribbons*

1. Apple
2. Apricot
3. Blackberry
4. Cherry
5. Cranberry
6. Grape
7. Mint
8. Peach
9. Pear
10. Pepper
11. Plum
12. Raspberry, red
13. Raspberry, black
14. Rhubarb
15. Strawberry
16. Other Jelly, identify (*Maybe a combination of two or more fruit*)

## SECTION 6: SOUR PICKLE CLASSES

*Exhibitors placed 1st-3rd awarded ribbons*

1. Beans
2. Dill
3. Mixed
4. Mustard
5. Tomato
6. Other Sour Pickle, identify

## SECTION 7: SWEET PICKLE CLASSES

*Exhibitors placed 1st-3rd awarded ribbons*

1. Beets
2. Bread & Butter
3. Crabapple
4. Cucumber
5. Fruit
6. Watermelon
7. Zucchini
8. Other Sweet Pickle, identify

## SECTION 10: RELISH & SAUCE CLASSES

*Exhibitors placed 1st-3rd awarded ribbons*

1. BBQ Sauces
2. Catsup/Chili Sauce
3. Corn Relish
4. Cranberry Relish/Sauce
5. Cucumber Relish
6. Pepper Relish
7. Salsa/Hot Sauce
8. Spaghetti/Tomato Sauce
9. Tomato Relish (Green/Red)
10. Zucchini Relish
11. Other Relish, identify
12. Other Sauce, identify

## SECTION 11: DRIED FRUIT & VEGETABLE CLASSES

*Exhibitors placed 1st-3rd awarded ribbons*

1. Fruit
2. Fruit Roll-Ups
3. Herbs
4. Jerky
5. Vegetables
6. Other Dried Item, identify

## SECTION 12: BUTTERS & PRESERVES CLASSES

*Exhibitors placed 1st-3rd awarded ribbons*

1. Apple
2. Apricot
3. Peach
4. Plum
5. Other, identify



# OPEN CLASS NON-ANIMAL EXHIBITS

## DEPARTMENT 43 - ARTS & CRAFTS

*Superintendent -*

### DEPARTMENT RULES:

- Only exhibits not previously shown at the Northwestern Michigan Fair are eligible for entry.
- Articles entered must be the original work of the exhibitor, no kits allowed.
- Art entries must be framed and wired for hanging.
- Artwork must be tasteful and family-oriented to be exhibited. No nudity allowed.
- Only one entry per class allowed.
- Exhibit must have been made within the last year.
- All miniatures must be entered in miniature class.
- All exhibits must be clean
- If exhibitor's name is visible, it must be covered during judging.
- PREMIUM: Exhibitors will receive ribbons of 1st through 3rd places, unless otherwise specified. 1st place recipient will receive a premium of \$3.00.
- Sweepstakes Ribbons awarded at the discretion of the judges.

### SECTION 1: PAINTING CLASSES

*Framed & wired for hanging. Exhibitors placed 1st-3rd awarded ribbons*

1. Acrylic (Animals)
2. Acrylic (Flowers)
3. Acrylic (Landscape/Seascape)
4. Acrylic (Still Life)
5. Oil (Animals)
6. Oil (Landscape/Seascape)

### SECTION 1: PAINTING CLASSES CONTINUED:

7. Oil (Flowers)
8. Oil (Still Life)
9. Watercolor (Animals)
10. Watercolor (Flowers)
11. Watercolor (Landscape/Seascape)
12. Watercolor (Still Life)

### SECTION 2: DRAWING CLASSES

*Exhibitors placed 1st-3rd awarded ribbons*

*Must be tasteful and family oriented.*

*Entries must be mounted on stiff material of any color or framed and wired for hanging.*

1. Chalk
2. Charcoal
3. Felt Pen
4. Ink
5. Pencil, Single
6. Pencil, Color
7. Other, identify

### SECTION 3: CREATIVE CRAFTS

*Exhibitors placed 1st-3rd awarded ribbons*

1. Clay
2. Combination of Materials
3. Metal
4. Wood
5. Other Sculpture, identify

### SECTION 4: CREATIVE CRAFTS CLASSES

*Must be original work - no kits. Exhibitors placed 1st-3rd awarded ribbons*

1. Basket making
2. Beading
3. Button Art
4. Calligraphy
5. Ceramics
6. Decoy
7. Etched Glass
8. Flowers (handmade)
9. Macramé
10. Jewelry
11. Leatherwork
12. Miniature
13. Mosaic
14. Painted Stones
15. Pottery
16. Pressed Flower Picture
17. Stained Glass
18. Toy, Handmade, Wood
19. Wood Article, Hand Carved
20. Wood Article, Machine Carved

### SECTION 4: CREATIVE CRAFTS CLASSES CONTINUED:

21. Wood Article, Furniture
22. Wood Article, Outside Item
23. Wood Burning
24. Wreath, Decorated
25. Wreath, Dried Flowers/Herbs
26. Yard Art (Metal)
27. Yard Art (Stone)
28. Yard Art (Wood)
29. Yard Art (Other)
30. Other Creative Craft, identify

### SECTION 5: OTHER FABRIC CRAFT CLASSES

*Exhibitors placed 1st-3rd awarded ribbons*

1. Batik
2. Beaded
3. Hand Painted
4. No Sew Appliqué
5. Sewn Appliqué
6. Silk Ribbon
7. Silkscreen
8. Stencil
9. Tie Dye
10. Other Fabric Craft, identify

### SECTION 6: HOLIDAY ITEM CLASSES

*Must be original work - no kits. Exhibitors placed 1st-3rd awarded ribbons*

1. Decorations (Table)
2. Decorations (Wall)
3. Greeting Cards (3)
4. Stocking
5. Tree Ornaments (4)
6. Tree Skirt
7. Other Holiday Item, identify

### SECTION 7: FOLK ART CLASSES

*Exhibitors placed 1st-3rd awarded ribbons*

8. Candle Making, Hand Dipped
9. Candle Making, Molded
10. Cornhusk, Doll
11. Painting, Toile
12. Quilling
13. Soap (handmade)
14. Tinwork
15. Weaving, basket
16. Weaving, chair seat
17. Whittling
18. Other Folk Art, identify

# OPEN CLASS NON-ANIMAL EXHIBITS

## DEPARTMENT 44 -

### PHOTOGRAPHY

*Superintendent -*

#### DEPARTMENT RULES:

- All photos themselves must be one size, 8"x10" and mounted on stiff material (cardboard, etc.). The photo, once mounted on stiff material, should be matted with a mat size of 11"x14". Mats can be purchased at many retail stores, hobby stores, or framing stores. Mats may be of any color. The finished product will be an 8"x10" photo inside an 11"x14" mat. The finished exhibit will be 11"x14".
- Limit one entry per class for each exhibitor.
- All photography must be tasteful and family oriented. No nudity allowed.
- Pictures entered must have been taken after July 2023.
- If exhibitor's name is visible, it must be covered during judging.
- Still life photo defined as a group of inanimate objects arranged by exhibitor.
- PREMIUM: Exhibitors will receive ribbons for their appropriate placing of 1st through 3rd places, unless otherwise specified.
- Sweepstakes Ribbons awarded at the discretion of the judges.

#### SECTION 1: BLACK & WHITE CLASSES

*Exhibitors placed 1st-3rd awarded ribbons*

1. Architecture
2. Landscape
3. Portraits
4. Still Life
5. Other Black & White, identify

#### SECTION 2: COLOR CLASSES

*Exhibitors placed 1st-3rd awarded ribbons*

1. Architecture
2. Animals/Birds/Insects
3. Sunrise/Sunset
4. Landscape
5. Moods
6. Night Picture
7. Plants/Flowers
8. Portraits
9. Religious
10. Sports, Action
11. Still Life
12. Water Picture
13. Winter Scene

## SECTION 2: SPECIAL CATEGORY CLASSES

*Exhibitors placed 1st-3rd awarded ribbons*

1. Reflections I: An image, landscape, or otherwise that reflects.
2. Reflections II: A thought; long consideration; an act of reflection. Include the inspiration in 25 words or less and secure to picture back.
3. Photo Shop: Must submit original photo being photoshopped. Original photo need not be mounted but must be submitted with entry.
4. Make Me Smile: A photo that makes the world smile (and the Judge).
5. Your Favorite Photo: Photo can be minimum size 5"x7" up to maximum size 8"x12". Must be matted, mat size 11"x14". Follow department rules - no frame.

## DEPARTMENT 45 -

### ANTIQUES & HEIRLOOMS

*Superintendent - Sue Egelus*

#### DEPARTMENT RULES:

- Antiques previously entered may be re-entered after three years.
- ALL ENTRIES MUST BE AT LEAST 50 YEARS OLD. Only one entry per class for each exhibitor and only 4 entries in each section.
- Any special arrangements must be approved by Superintendent of Department.
- Exhibitors are encouraged to attach a 3"x5" card outlining interesting information about their exhibit (year, history, ownership, etc.)
- Antiques must be clean to handle.
- PREMIUM: Exhibitors will receive ribbons for their appropriate placing of 1st through 3rd places, unless otherwise specified. 1st place recipient will receive a premium of \$3.00.
- Sweepstakes Ribbons awarded at the discretion of the judges.

#### SECTION 1: CHINA & PORCELAIN CLASSES

*Exhibitors placed 1st-3rd awarded ribbons*

1. Bowl & Pitcher
2. Candlestick
3. Candy Dish
4. Covered Butter Dish
5. Cracker Jar
6. Cream & Sugar

## SECTION 1: CHINA & PORCELAIN CLASSES CONTINUED:

7. Cup & Saucer
8. Figurine
9. Gravy Bowl
10. Mustache Cup
11. Pitcher
12. Plate - Hand Painted, Signed, Marked
13. Plate - Individual
14. Platter
15. Relish Dish
16. Salt & Pepper - Pair
17. Sauce Dishes - Pair
18. Shaving Mug
19. Tea Pot
20. Toothpick Holder
21. Vase
22. Vegetable Boat with Cover
23. Vegetable Bowl
24. Other

## SECTION 2: GLASSES CLASSES

*Exhibitors placed 1st-3rd awarded ribbons*

1. Animal, Bird, or Fish Figurine
2. Basket
3. Bowl
4. Cake Plate
5. Candlesticks
6. Candy Dish
7. Compote
8. Covered Butter Dish
9. Covered Compote
10. Cracker Jar
11. Cookie Jar
12. Cream & Sugar
13. Cup & Saucer
14. Decanter
15. Goblet - Individual
16. Juicer
17. Knobs (Furniture or Door/2-4)
18. Perfume Bottle
19. Pitcher
20. Plates
21. Platter
22. Relish Dish
23. Salt & Pepper (pair)
24. Salt Cellar
25. Sauce Dish (2-4)
26. Spoon Holder
27. Syrup Jug
28. Toothpick Holder
29. Tumbler
30. Vase

# OPEN CLASS NON-ANIMAL EXHIBITS

## SECTION 2: GLASSES CLASSES CONTINUED

31. Vinegar Curet
32. Water Glass
33. Wine Glass
34. Water Pitcher
34. Other

## SECTION 3: SINGLE ARTICLE CLASSES

*Exhibitors placed 1st-3rd awarded ribbons*

1. Aluminum Item
2. Art Pottery
3. Autograph Book
4. Automobile Item
5. Bank
6. Basket (Woven)
7. Bell
8. Blow Torch
9. Book
10. Brass Item
11. Bronze Item
12. Butter Churn
13. Buttons
14. Button Hook
15. Camera
16. Christmas Ornaments
17. Clock
18. Coins
19. Copper Item
20. Crockery Item
21. Curling Iron
22. Doll (Cloth)
23. Doll (all or part porcelain)
24. Enamelware (kettle or pan)
25. Eyeglasses
26. Fan
27. Fishing Lures/Reels
28. Flat Silver Service
29. Garden Toool
30. Graniteware
31. Hat Pins
32. Interesting dated letters/contracts/posters
33. Iron Item (farm)
34. Iron Item (home)
35. Jewelry
36. Jug Crockery
37. Kitchen Gadgets
38. Lamp
39. Lantern
40. License Plates
41. Magazine
42. Map

## SECTION 3: SINGLE ARTICLE CLASSES CONTINUED:

43. Marbles
44. Military Item
45. Native American Relics
46. Paperweight
47. Perfume Bottle
48. Pewter
49. Photograph Book
50. Postcards
51. Radio (table model)
52. Razor
53. Scrapbook
54. Silver Item
55. Sports Memorabilia
56. Steel Trap
57. Telephone
58. Tin
59. Toy
60. Watch
61. Wooden Item
62. Other

## SECTION 4: FRUIT JAR & BOTTLE CLASSES

*Exhibitors placed 1st-3rd awarded ribbons*

1. Baby Bottle
2. Beer/Soda Bottle
3. Bitters/Medicine Bottle
4. Fruit jar (1/2 pint)
5. Fruit jar (1 pint)
6. Fruit jar (1 quart)
7. Fruit jar (2 quarts)
8. Ink Bottle
9. Insulator
10. Mug/Stein
11. Milk Bottle (with company name)
12. Stoneware Bottle
13. Whiskey/Wine Bottle
14. Other

## SECTION 5: ANTIQUE FURNITURE CLASSES

*Exhibitors placed 1st-3rd awarded ribbons*

1. Baby Bed or Cradle
2. Child's Chair/Rocker
3. Document Box
4. Doll Trunk
5. Footstool
6. Framed Portrait or Group
7. Picture Frame
8. Small Table (wood)
9. Toy Chest
10. Trunk
11. Victrola
12. Wall Shelf
13. Wooden Chair/Rocker (Adult)
14. Other

## SECTION 6: TEXTILE CLASSES

*Exhibitors placed 1st-3rd awarded ribbons*

1. Quilts
2. Tablecloths/linens
3. Clothing
4. Other

## DEPARTMENT 81-

## OPEN DIFFERENTLY ABLED

*Superintendent -*

### DEPARTMENT RULES:

- Open for differently abled (special needs) adults ages 27 & older. The main goal is to acknowledge exhibitors efforts rather than project competition. More than one item per section may be entered. Items will not be given placing, rather the exhibitor will be awarded a ribbon for each project.

### SECTION 1: CLASSES

1. Culinary Arts/Food Preservation
2. Fine Arts
3. Fold Arts/Crafts
4. Horticulture/Agriculture/Floriculture
5. Photography
6. Misc.

## OPEN CLASS YOUTH SKILLS

*Superintendent -*

### PROGRAM RULES:

- Exhibitors are divided into 4 groups: 5-7 years old, 8-11 years old, 12-14 years old, and 15-17 years old. Exhibitor's age is computed as of January 1, 2024. These age groups will apply in all sections unless otherwise indicated.
- **Enter all exhibits by age category:**
  - **A. 5-7year olds: list the class number and the letter "A"**
  - **B. 8-11 year olds: list the class number and the letter "B" after.**
  - **C. 12-14 year olds: list the class number and the letter "C" after.**
  - **D. 15-17 year olds: list the class number and the letter "D" after.**

# OPEN CLASS NON-ANIMAL EXHIBITS

## PROGRAM RULES CONTINUED:

- Exhibitors are divided into 4 groups: 5-7 years old, 8-11 years old, 12-14 years old, and 15-17 years old. Exhibitor's age is computed as of January 1, 2024. These age groups will apply in all sections unless otherwise indicated.
- All articles must be the work of the exhibitor and must have been made since the previous year's Fair.
- Items not listed or not meeting requirements will not be judged.
- Only one entry per class per exhibitor.
- PREMIUM: Exhibitors will receive ribbons for their appropriate placing of 1st through 3rd places, unless otherwise specified. 1st place recipient will receive a premium of \$3.00.
- Sweepstakes ribbons awarded at the discretion of the judges.

## DEPARTMENT 60 - YOUTH NEEDLEWORK

### SECTION 1: SEWING CLASSES

*Exhibitors placed 1st-3rd awarded ribbons*

1. Apron
2. Blouse/Shirt
3. Hat
4. Holiday Article
5. Jacket
6. Jumper/Dress
7. Pants/Slacks
8. Pillow
9. Pillowcase
10. Placemats/Table Runner
11. Pot Holder
12. Quilt
13. Quilted Item
14. Skirt
15. Sleepwear
16. Tote, handbag
17. Toys/Dolls/Stuffed Animals
18. Other Sewing Item, identify

### SECTION 2: NEEDLEWORK CLASSES

*Exhibitors placed 1st-3rd awarded ribbons*

1. Cross Stitch
2. Embroidered
3. Latch Hook
4. Macrame
5. Needlepoint
6. Plastic Canvas
7. Weaving
8. Other Needlework Item, identify

## SECTION 3: KNITTING CLASSES

*Exhibitors placed 1st-3rd awarded ribbons*

1. Afghan
2. Cape/Shawl/Poncho
3. Coasters
4. Dishcloth
5. Doily
6. Doll Garmet/Baby Item
7. Flower
8. Footwear
9. Hat
10. Holiday Article
11. Home Accessory/Household Item
12. Mittens/Gloves
13. Potholder
14. Purse/Bag
15. Scarf
16. Sweater
17. Toy
18. Other, identify

## SECTION 4: CROCHET CLASSES

*Exhibitors placed 1st-3rd awarded ribbons*

1. Afghan
2. Cape/Shawl/Poncho
3. Coasters
4. Dishcloth
5. Doily
6. Doll Garmet/Baby Item
7. Flower
8. Footwear
9. Hat
10. Holiday Article
11. Home Accessory/Household Item
12. Mittens/Gloves
13. Potholder
14. Purse/Bag
15. Scarf
16. Sweater
17. Toy
18. Other, identify

## DEPARTMENT 61 - YOUTH CULINARY ARTS

### DEPARTMENT RULES:

- Place all exhibits except decorated and frosted cakes, on clear plastic plates or cardboard cut to size.
- Enclose all entries in appropriately sized and sealed plastic bag.
- NO PLASTIC WRAP

## DEPARTMENT RULES CONTINUED:

- Decorated cakes, frosted cakes must be wrapped. Plastic wrap acceptable. Pies must be put in appropriate sized Ziploc bag.
- Option of leaving whole cake, loaf, or pie or just ½ for judging and display. Canning: Food must be preserved in clear and clean jars. No colored jars. Jars must be properly labeled with name of product and date processed. Jars must be properly sealed and cleaned, following USDA guidelines. Canning lids and rings must be untarnished. The ring must be removable.
- Canned foods must be processed after June 2023.

## SECTION 1: CAKE CLASSES

*Exhibitors placed 1st-3rd awarded ribbons*

1. Cupcakes, frosted (3)
2. Cupcakes, decorated (3)
3. Decorated cake
4. Layer, frosted
5. Other cakes, identify

## SECTION 2: CANNING CLASSES

*Exhibitors placed 1st-3rd awarded ribbons*

1. Fruit
2. Jam
3. Jelly
4. Pickle
5. Relish
6. Sauce
7. Vegetable
8. Other canning, identify

## SECTION 3: CANDY & CONFECTIONS CLASSES

*Exhibitors placed 1st-3rd awarded ribbons*

1. Caramel Corn
2. Caramel
3. Fudge, 4
4. Hard Candy, 4
5. Peanut Brittle
6. Sugar Nuts
7. Toffee
8. Other Candy, identify

# OPEN CLASS NON-ANIMAL EXHIBITS

## SECTION 4: COOKIE CLASSES

*Exhibitors placed 1st-3rd awarded ribbons*

1. Bar, 4
2. Brownies, 4
3. Decorated Cookies, 3
4. Drop, 4 (Batter dropped from spoon onto baking sheet)
5. Refrigerator (Dough, formed into rolls, chilled, sliced, baked), 4
6. Rolled, cut into shapes, 4 (Dough cut into shapes after rolling out)
7. Shaped, formed by hand, with fork, or cookie press, 4
8. Unbaked, 4

## SECTION 5: PIES CLASSES

*Exhibitors placed 1st-3rd awarded ribbons*

1. Apple
2. Cherry
3. Fruit Cobbler
4. Other fruit pie, identify

## SECTION 6: BREAD CLASSES

*Exhibitors placed 1st-3rd awarded ribbons*

1. Biscuits, 3
2. Bread, quick
3. Bread, yeast
4. Coffeecake
5. Muffins, 3

## SECTION 7: GLUTEN FREE CLASSES

*Exhibitors placed 1st-3rd awarded ribbons*

6. Quick Bread
7. Cake
8. Cookies (4)
9. Biscuits (3)
10. Brownies (4)
11. Other Gluten Free, Identify

## DEPARTMENT 63 -

### YOUTH ARTS & CRAFTS

#### SECTION 1: PAPER CRAFTS CLASSES

*Exhibitors placed 1st-3rd awarded ribbons*

1. Cards (handmade)
2. Collage
3. Creative Poems
4. Creative Writing
5. Decoupage
6. Paper Craft
7. Paper Mache
8. Scrap Booking
9. Tissue Paper

#### SECTION 2: CREATIVE ARTS CLASSES

*Exhibitors placed 1st-3rd awarded ribbons*

1. Beaded Item
2. Button Art
3. Candle
4. Clay/Pottery
5. Collage
6. Felt
7. Game, homemade with rules
8. Glass Craft
9. Holiday Item
10. Jewelry
11. Key Chain
12. Leather Craft
13. Lego - Kit (Participation)  
*Must be placed on a board/pan.*
14. Lego - Non Kit - Judged  
*Must be placed on a board/pan.*
15. Mobile
16. Model
17. No Sew
18. Painted Item
19. Painted Stone
20. Recyclable Craft
21. Rubber Band
22. Stamp Art

#### SECTION 2: CREATIVE ARTS CLASSES CONTINUED

23. Stencil
24. Soap Homeade
25. Tie Dyed Item
26. Toy Display
27. Toy/Doll/Animal, crafted
28. Wall Hanging/Window

#### SECTION 3: WOODWORKING CLASSES

*Exhibitors placed 1st-3rd awarded ribbons*

1. Bench
2. Bird Feeder/Birdhouse
3. Bookends
4. Carving
5. Toy
6. Flower Planter
7. Footstool
8. Gun Rack
9. Handmade Small Model
10. Lamp
11. Lawn Ornament
12. Model, large, identify (such as fort)
13. Sign

#### SECTION 4: DRAWING CLASSES

*Exhibitors placed 1st-3rd awarded ribbons*

1. Chalk
2. Charcoal
3. Colored Pencil Art
4. Marker Art
5. Pencil, single
6. White on black drawing
7. Other, Art, identify

#### SECTION 5: FINE ARTS - PAINTING CLASSES

*Must be able to hang "Wired for Hanging"*

*Exhibitors placed 1st-3rd awarded ribbons*

1. Acrylic/Tempera
2. Oil
3. Watercolor

# OPEN CLASS NON-ANIMAL EXHIBITS

## SECTION 6: PRESCHOOL (4 & UNDER) CLASSES

- For display only (not judged)
  - Each entry will receive a participation ribbon.
  - Drawing must be mounted on stiff material (cardboard, etc.)
  - NO FRAMES OR GLASS
1. Bead Item
  2. Clay Item
  3. Crayon Drawing
  4. Felt Marker Drawing
  5. Painted Stone
  6. No Sew Item
  7. Baked Item, identify

## DEPARTMENT 64 - YOUTH PHOTOGRAPHY

### DEPARTMENT RULES:

- All photos must be 5"x7" and mounted on stiff material (cardboard, etc.) of any color. The finished product should measure 8"x10". NO FRAMES OR GLASS.
- All photography must be tasteful and family oriented.

### SECTION 1: PHOTOGRAPHY CLASSES

*Exhibitors placed 1st-3rd awarded ribbons*

1. Animals/birds/insects
2. Architecture
3. Landscape
4. Moods
5. Night Picture
6. Plants/Flowers
7. Portraits
8. Religious
9. Sport, action
10. Still Life
11. Sunrise/Sunset
12. Water Picture
13. Winter Scene

## DEPARTMENT 70 - YOUTH NATURAL RESOURCES

### SECTION 1: YOUTH NATURE STUDY CLASSES

*Exhibitors placed 1st-3rd awarded ribbons*

1. Leaves - 12 or more correctly identified native of Michigan
2. Wildflowers - 12 or more correctly identified native of Michigan
3. Butterflies - At least 10 identified & mounted
4. Shells - At least 8 identified & mounted
5. Stones - At least 8 identified & mounted
6. Insects - At least 8 identified & mounted

## DEPARTMENT 72 - OPEN CLASS YOUTH DIFFERENTLY ABLED

*Superintendent -*

### DEPARTMENT RULES:

- Open for differently abled children ages 6-26. The main goal is to acknowledge exhibitors efforts rather than project competition. More than one item per section may be entered. Items will not be given placing; rather the exhibitor will be awarded a ribbon for each project.

### SECTION 1: CLASSES

1. Horticulture/Agriculture/Floriculture
2. Folk arts/crafts
3. Photography
4. Culinary arts/food preservation
5. Fine arts
6. Misc.

# OPEN CLASS NON-ANIMAL EXHIBITS

## **TANNER BUILDING**

### **AGRICULTURE, HORTICULTURE, and FLORICULTURE**

*Superintendent – Duke Elsner*

During Fair week, the Tanner Building will be open to the public Monday through Saturday 9 am to 9 pm.

## **DEPARTMENT 46 - AGRICULTURE & HORTICULTURE**

### **DEPARTMENT RULES:**

- Exhibitors must be 13 years of age or older, as of January 1 of the current year.
- Pick up your entry stickers at the fair office before coming to the building.
- Entries will be accepted Saturday, August 3, 2024, noon to 6 pm and Sunday, August 4, 10 am to 6 pm. Exhibits must be in place by 6 pm on Sunday.
- Exhibits may be removed Saturday, August 10, noon to 9 pm, or on Sunday, August 11, 9 am to noon.
- All entries must have been grown in Michigan by the exhibitor.
- All seeds and grains must have been produced and harvested within the previous 12 months (since mid-August of 2023).
- All exhibits must have fair-issued exhibit tickets. The department, section, class and exhibitor numbers should be clearly visible; the exhibitor's name should be hidden from view by folding the ticket.
- Exhibitors must adhere to the directions given under each section and/or class.

- Entries bearing incorrect section or class numbers may be reassigned to an appropriate section and class by the superintendents, if possible; if not possible, the entry will not be judged.
- Exhibitors may make only one entry per class.
- Judging will take place on Sunday, August 4 or Monday August 5. Judging criteria varies by department, section and/or class.
- PREMIUM: Exhibitors will receive ribbons for their appropriate placing of 1st through 3rd places, unless otherwise specified. 1st place recipient will receive a premium of \$3.00, unless otherwise specified.
- Official fair ribbons will not be available until Friday, August 9.

## **DEPARTMENT 46A - FIELD AND FORAGE CROPS**

### **SECTION 1: SPECIAL EXHIBIT CLASSES**

*Exhibitors will receive ribbons for their appropriate placing of 1st through 6th places. 1st place recipient will receive a premium of \$10.00.*

1. Farm Market Exhibit  
*Best selected, best grown, and most carefully handled exhibit of farm market produce consisting of 15 distinctly different items.*
2. Vegetable Basket  
*An exhibit grown by one exhibitor with at least 9 different vegetables.*

### **SECTION 2: SMALL GRAIN CLASSES**

- *Entries should be a full peck or gallon container of cleaned grain.*
- *Judging criteria includes purity of variety, form, plumpness, color, adaptation, freedom from disease, weed seed or foreign material, and proper naming.*
  1. Barley
  2. Buckwheat
  3. Oats
  4. Rye
  5. Spelt
  6. Wheat, red
  7. Wheat, white

### **SECTION 3: SHEAF GRAIN CLASSES**

- *Entries should be 3 inches in diameter below the heads and tightly tied.*
- *Judging criteria includes purity of variety, form, freedom from pest injury, weeds or foreign material, and proper naming.*
  1. Sheaf of barley
  2. Sheaf of buckwheat
  3. Sheaf of oats
  4. Sheaf of rye
  5. Sheaf of wheat
  6. Other (identify)

# OPEN CLASS NON-ANIMAL EXHIBITS

## SECTION 4: BEAN AND SOY-BEAN CLASSES

- *Entries should be a full quart container of cleaned seeds.*
  - *Judging criteria includes purity of variety, form, plumpness, color; adaptation, freedom from pest injury, weed seed or foreign material, and proper naming.*
1. Soybeans
  2. Navy beans
  3. Kidney beans
  4. Other (identify)

## SECTION 5: FORAGE BUNDLE CLASSES

- *Entries should be 4 inches in diameter at the center and securely tied.*
  - *Judging criteria includes purity of variety, form, freedom from pest injury, weeds or foreign material, and proper naming.*
1. Alfalfa
  2. Alfalfa (mature)
  3. Alsike
  4. Barley
  5. Birds foot trefoil
  6. Brome grass
  7. Foxtail
  8. Millet
  9. Orchard grass
  10. Quack grass
  11. Red clover
  12. Reeds canary grass
  13. Soybeans
  14. Sudan grass
  15. Sweet clover hay

## SECTION 6: FIELD CORN CLASSES

- *Shelled corn entries should be a full peck or gallon container of material.*
  - *Judging criteria includes consistency, texture, moisture level, and proper naming.*
1. Corn, shelled
  2. Ear, longest
  3. Corn stalk, tallest
  4. Silage corn stalk, tallest

## SECTION 7: FERMENTED FEED CLASSES

- *Entries should be a full peck or gallon container of material.*
  - *Judging criteria includes consistency, texture, moisture level, and proper naming.*
1. Corn silage
  2. Soybean silage
  3. Haylage

## SECTION 8: BALED CROPS

- *Entries should be a small bale.*
  - *Judging criteria includes consistency, absence of weeds or foreign material, moisture level, tightness of bale, and proper naming.*
1. Alfalfa, 1st cutting
  2. Alfalfa, 2nd or later cutting
  3. Alfalfa/grass mix, 1st cutting
  4. Alfalfa/grass mix, 2nd or later cutting
  5. Straw bales

## DEPARTMENT 46B - VEGETABLES & ROOT CROPS

- *Entries should be displayed on a paper plate, except when impractical or otherwise indicated.*
- *The number of individual vegetables per entry is noted in the section or class descriptions.*
- *Judging criteria includes representation of variety, conformity, maturity, color, freedom from pest and disease injury, cleanliness and adherence to class description.*

## SECTION 1: CORN CLASSES

1. Sweet corn, longest ear
2. Popcorn, longest ear
3. Shelled popcorn, a pint or more
4. Ornamental corn, longest ear

## SECTION 2: SUNFLOWER CLASSES

1. Sunflower head, largest diameter
2. Sunflower, stalk with head, tallest

## SECTION 3: BEANS, PEAS & OTHER LEGUME CLASSES

- *Entries should consist of 12 pods.*
1. Pole beans, green
  2. Pole beans, yellow
  3. Pole beans, purple
  4. Bush beans, green
  5. Bush beans, yellow
  6. Bush beans, purple
  7. Bush beans, lima
  8. Shelling peas
  9. Sugar pea pods
  10. Snap peas
  11. Peanuts



# OPEN CLASS NON-ANIMAL EXHIBITS

## SECTION 4: FOLIAGE, STEM, & FLORAL CROP CLASSES

1. Broccoli
2. Brussel sprouts (6)
3. Cabbage, early
4. Cabbage, late
5. Cabbage, red
6. Cabbage, savoy
7. Cabbage, Chinese
8. Cauliflower
9. Kale
10. Leeks (3)
11. Lettuce, leaf
12. Lettuce, head
13. Lettuce, red
14. Endive
15. Spinach
16. Swiss chard
17. Mustard greens
18. Rhubarb (6)
19. Asparagus (6)
20. Celery
21. Artichokes
22. Kohlrabi
23. Okra
24. Other, identify

## SECTION 5: VINE CROP CLASSES

1. Cucumber, slicing (3)
2. Cucumber, dill (3)
3. Cucumber, pickling (3)
4. Cucumber, other (identify)
5. Cucumber, longest
6. Zucchini for slicing
7. Zucchini, globe
8. Zucchini, longest
9. Zucchini, heaviest
10. Squash, yellow straight neck
11. Squash, yellow crooked neck
12. Squash, patty pan
13. Squash, spaghetti
14. Squash, buttercup
15. Squash, butternut
16. Squash, acorn
17. Squash, Hubbard
18. Squash, other (provide variety name)
19. Gourds
20. Pumpkin, heaviest
21. Pumpkin, munchkin
22. Watermelon
23. Melon, other

## SECTION 6: PEPPER, TOMATO & RELATED CLASSES

1. Peppers, sweet bell (3)
2. Peppers, sweet, non-bell (3)
3. Peppers, hot (3)
4. Peppers, ornamental
5. Peppers, container-grown plant
6. Tomatoes, cherry/grape/pear (12)
7. Tomatoes, paste or roma (5)
8. Tomatoes, beefsteak/slicers, ripe (5)
9. Tomatoes, green (5)
10. Tomatoes, heirloom
11. Tomatoes, container-grown plant
12. Tomatillo (6)
13. Eggplants

## SECTION 7: POTATO CLASSES

1. Russet (7)
2. Red skinned (7)
3. Yellow/golden skinned (7)
4. Purple skinned (7)
5. Purple or blue fleshed (7)
6. Fingerling (7)
7. Oddest shaped
8. Heaviest
9. Sweet potatoes (3)

## SECTION 8: ONION & GARLIC CLASSES

1. Onions, white (3)
2. Onions, yellow (3)
3. Onions, green (6)
4. Onions, red (3)
5. Onions, Spanish sweet
6. Onions, multiplier (12)
7. Garlic

## SECTION 9: OTHER ROOT CROP CLASSES

1. Carrots, table (3)
2. Carrots, stock (3)
3. Beets, early (3)
4. Beets, late (3)
5. Sugar beets
6. Radishes (5)
7. Turnips, white
8. Turnips, yellow
9. Rutabaga, white
10. Rutabaga, yellow
11. Horseradish
12. Parsnips

## SECTION 10: HERBS CLASSES

- *Entries should be in water, using a glass or plastic container.*
1. Basil
  2. Catmint
  3. Catnip
  4. Lavender
  5. Lemon balm
  6. Lemon mint
  7. Marjoram
  8. Oregano
  9. Peppermint
  10. Rosemary
  11. Sage
  12. Savory
  13. Spearmint
  14. Thyme
  15. Anise
  16. Caraway
  17. Chives
  18. Citron
  19. Coriander
  20. Cumin
  21. Dill
  22. Fennel
  23. Hops
  24. Licorice
  25. Parsley
  26. Salsify
  27. Sorrel
  28. Tansy
  29. Tarragon
  30. Wormwood
  31. Other (identify)

# OPEN CLASS NON-ANIMAL EXHIBITS

## DEPARTMENT 46C - FRUITS & NUTS

- *Entries should be displayed on a paper plate, except when impractical or otherwise indicated.*
- *The number of individual vegetables per entry is noted in the section or class descriptions.*
- *Judging criteria includes representation of variety, conformity, size, maturity, color, freedom from pest and disease injury, cleanliness and adherence to class description.*

### SECTION 1: TREE FRUIT CLASSES

1. Apples, early (5)
2. Apples, late (5)
3. Apple, largest
- Pears, standard (5)
5. Pears, Asian (5)
6. Plums (5)
7. Peaches (5)
8. Apricots (5)
9. Cherries, sweet (12)
10. Cherries, tart (12)

### SECTION 2: BERRY CLASSES

- *Entries should be pint containers.*

  1. Raspberries, red
  2. Raspberries, black
  3. Raspberries, other
  4. Blackberries
  5. Blueberries
  6. Strawberries
  7. Berries, other (identify)
  8. Container-grown strawberry plant

### SECTION 3: NUT CLASSES

1. Walnuts, black (5)
2. Walnuts, English (5)
3. Chestnuts (5)
4. Hazelnuts or Filberts (5)

## DEPARTMENT 46D - OTHER AGRICULTURAL PRODUCTS

### SECTION 1: MAPLE SYRUP CLASSES

- *Quality, quantity, appearance, and condition for market are considered in judging. Displays must be new each year.*

  1. 9 ounce jar
  2. Pint
  3. Creamed
  4. Maple sugar
  5. Maple candies

### SECTION 2: APIARY CLASSES

- *Quality, quantity, appearance, and condition for market are considered in judging. Displays must be new each year.*

  1. Section of comb
  2. Comb honey
  3. Extracted pint

### SECTION 3: EGGS

1. Chicken, white (6)
2. Chicken, brown (6)
3. Other (6, identify)

## DEPARTMENT 47 - FLORICULTURE

### DEPARTMENT RULES:

- Exhibitors must be 13 years of age or older, as of January 1 of the current year.
- Pick up your entry stickers at the fair office before coming to the building.
- Entries will be accepted Sunday, August 4, 2024, 10 am to 6 pm. Exhibits must be in place by 6 pm on Sunday.
- Exhibits may be removed Saturday, August 10, noon to 9 pm, or on Sunday, August 11, 9 am to noon.
- All live plant material must have been grown in Michigan by the exhibitor, with exceptions noted in the section and class descriptions.

## DEPARTMENT RULES CONTINUED

- All exhibits must have fair-issued exhibit tickets. The department, section, class and exhibitor numbers should be clearly visible; the exhibitor's name should be hidden from view by folding the ticket.
- Exhibitors may make only one entry per class.
- Exhibitors must adhere to the directions given under each section and/or class.
- Cut flower and rose entries must be in a clear glass or plastic container with no labels, with the exception of arrangements which can be in any appropriate watertight container.
- Container grown plant must have been in the current container for a minimum of three months.
- No entries may exceed 4 feet in height or width.
- No polishes may be used.
- Entries bearing incorrect section or class numbers may be reassigned to an appropriate section and class by the superintendents, if possible; if not possible, the entry will not be judged.
- Judging will take place on Sunday, August 4, after 6 pm. Judging criteria varies by department, section and/or class.
- PREMIUM: Exhibitors will receive ribbons for their appropriate placing of 1st through 3rd places, unless otherwise specified. 1st place recipient will receive a premium of \$3.00, unless otherwise specified.
- Official fair ribbons will not be available until Friday, August 9.

### SECTION 1: SUCCULENTS CLASSES

1. Agave
2. Aloe
3. Crassula
4. Euphorbia
5. Hawthoria
6. Kalanchoe
7. Sedums
8. Stapelia
9. Other (please type)

# OPEN CLASS NON-ANIMAL EXHIBITS

## SECTION 2: CACTUS CLASSES

1. Barrel
2. Bearded
3. Bishop's Cap
4. Column type
5. Christmas/Thanksgiving
6. Easter
7. Fishhook
8. Mammillarias
9. Orchid
10. Peanut
11. Prickly Pear type
12. Rattail
13. Other (specify type)

## SECTION 3: FOLIAGE & BLOOMING PLANTS CLASSES

1. African violet
2. Begonia, flowering
3. Bromelaid
4. Caladium
5. Coleus
6. Diffenbachia
7. Dracaenas
8. Ferns
9. Ficus
10. Fuschia
11. Geranium
12. Norfolk pine
13. Orchid
14. Herb planter, single variety
15. Herb planter, mixed (three or more varieties)

## SECTION 4: CUT FLOWER ARRANGEMENT CLASSES

- Arrangements must be arranged by the exhibitor.
- Flowers used in this section need not be grown by the exhibitor.
- Entries will be judged on design, color, conformity, originality, condition and mechanics.
- **PREMIUMS:** Exhibitors will receive ribbons for their appropriate placing of 1st through 3rd places, 1st place recipient will receive a premium of \$5.00.

1. Winter Wonderland - all white arrangements
2. Autumn On My Mind - use of autumn colors
3. Patriotic - red, white & blue arrangements
4. Coffee Break - arrangement in a coffee cup
5. School Colors - provide printed material showing school colors

6. Country Kitchen - kitchen utensils as container
7. Go Green - all green arrangement
8. Let's Party - arrangement with a holiday theme
9. Little Ones - miniature arrangement under 4" tall
10. Tisket-a-Tasket - arrangement in a basket
11. Something Old - arrangement of dried flowers
12. Wild About Flowers - arrangement using wild flowers

## SECTION 5: CUT ANNUALS CLASSES

- Display only one stem with foliage for each entry
- Use only clear glass or plastic containers with no labels
- **PREMIUM:** Exhibitors will receive ribbons for their appropriate placing of 1st through 3rd places.

1. Ageratum
2. Cleome
3. Celosia
4. Coleus
5. Everlasting
6. Marigold
7. Salvia
8. Sunflower
9. Zinnia
10. Other (please name)

## SECTION 6: CUT PERENNIALS CLASSES

- Display only one stem with foliage for each entry.
- **PREMIUMS:** Exhibitors will receive ribbons for their appropriate placing of 1st through 3rd places

1. Aster
2. Astilbe
3. Chrysanthemum
4. Coneflower
5. Coral Bells
6. Dahlia
7. Daisy
8. Daylily
9. Foxglove
10. Gladiolus
11. Helianthus & Heliopsis
12. Hibiscus
13. Hosta
14. Hydrangea
15. Lily, Asiatic
16. Lily, Oriental

## SECTION 6: CUT PERENNIALS CLASSES CONTINUED

17. Lobelia
18. Monarda
19. Penstemon
20. Phlow
21. Rudbeckia
22. Tansy
23. Veronica
24. Viola
25. Yarrow
26. Other (please name)

## SECTION 7: ROSE CLASSES

- **PREMIUMS:** Exhibitors will receive ribbons for their appropriate placing of 1st to 3rd places.

1. Hybrid Tea Roses - one stem with one bloom
2. Floribunda - spray with two or more blooms
3. Grandiflora - spray with two or more blooms
4. Climbers or ramblers
5. Miniatures - one stem with one bloom
6. Miniatures - spray with two or more blooms
7. Species, shrubs, others (identify)

## SECTION 8: SWEEPSTAKES AWARD CLASS

- Sweepstakes Awards may be given for the outstanding plant or cut flower, the outstanding arrangement, and outstanding rose exhibit, at the discretion of the judges.

# OPEN CLASS NON-ANIMAL EXHIBITS

## DEPARTMENT 67 - YOUTH FLORICULTURE

### DEPARTMENT RULES:

- Exhibitors must be 5 to 12 years of age, as of January 1 of the current year.
- Pick up your entry stickers at the fair office before coming to the building.
- Entries will be accepted Saturday, August 3, 2024, noon to 6 pm, and Sunday, August 4, 10 am to 6 pm. Exhibits must be in place by 6 pm on Sunday.
- Exhibits may be removed Saturday, August 12, noon to 9 pm, or on Sunday, August 13, 9 am to noon.
- All live plant material must have been grown in Michigan by the exhibitor, with exceptions noted in the section and class descriptions.
- All exhibits must have fair-issued exhibit tickets. The department, section, class and exhibitor numbers should be clearly visible; the exhibitor's name should be hidden from view by folding the ticket.
- Exhibitors may make only one entry per class.
- Exhibitors must adhere to the directions given under each section and/or class.
- Cut flower entries must be in a clear glass or plastic container with no labels, with the exception of arrangements which can be in any appropriate water-tight container.
- Container grown plant must have been in the current container for a minimum of three months.
- No entries may exceed 4 feet in height or width.
- No polishes may be used.
- Entries bearing incorrect section or class numbers may be reassigned to an appropriate section and class by the superintendents, if possible; if not possible, the entry will not be judged.
- Judging will take place on Sunday, August 6. Judging criteria varies by department, section and/or class.
- PREMIUM: Exhibitors will receive ribbons for their appropriate placing of 1st through 3rd places, unless otherwise specified. 1st place recipient will receive a premium of \$3.00, unless otherwise specified.
- Official fair ribbons will not be available until Friday, August 9.

### SECTION 1: FLORAL CLASS

- *Single specimen, in vase.*
1. Floral

### SECTION 2: ARRANGEMENTS CLASSES

1. Mixed flowers
2. Dried flowers
3. Wild flowers

### SECTION 3: HOUSEPLANTS CLASS

1. Houseplants

## DEPARTMENT 68 - YOUTH AGRICULTURE & HORTICULTURE

### DEPARTMENT RULES:

- Exhibitors must be 5 to 12 years of age, as of January 1 of the current year.
- Pick up your entry stickers at the fair office before coming to the building.
- Entries will be accepted Saturday, August 3, 2024, noon to 6 pm, and Sunday, August 4, 10 am to 6 pm. Exhibits must be in place by 6 pm on Sunday.
- Exhibits may be removed Saturday, August 10, noon to 9 pm, or on Sunday, August 11, 9 am to noon.
- All live plant material must have been grown in Michigan by the exhibitor, with exceptions noted in the section and class descriptions.
- All exhibits must have fair-issued exhibit tickets. The department, section, class and exhibitor numbers should be clearly visible; the exhibitor's name should be hidden from view by folding the ticket.
- Exhibitors may make only one entry per class.
- Exhibitors must adhere to the directions given under each section and/or class.
- Entries bearing incorrect section or class numbers may be reassigned to an appropriate section and class by the superintendents, if possible; if not possible, the entry will not be judged.
- Judging will take place on Sunday, August 6. Judging criteria varies by department, section and/or class.
- PREMIUM: Exhibitors will receive ribbons for their appropriate placing of 1st through 3rd places.
- Official fair ribbons will not be available until Friday, August 9.

### SECTION 1: FIELD CROP CLASSES

- *Entries may be grown by someone other than the exhibitor.*
  - *Sheaves or bundles should be 3 inches in diameter below the heads and tightly tied.*
  - *Judging criteria includes purity of variety, form, freedom from pest injury, weeds or foreign material, and proper naming.*
1. Sheaf of barley
  2. Sheaf of buckwheat
  3. Sheaf of oats
  4. Sheaf of rye
  5. Sheaf of wheat
  6. Forage bundle of alfalfa
  7. Forage bundle of birds foot trefoil
  8. Forage bundle of brome grass
  9. Forage bundle of foxtail
  10. Forage bundle of orchard grass
  11. Forage bundle of red clover

### SECTION 2: FRUIT & VEGETABLE CLASSES

1. Sweet corn (3 ears)
2. Sunflower head
3. Beans, any type (6 pods)
4. Peas, any type (6 pods)
5. Broccoli
6. Brussel sprouts (6)
7. Cabbage, any type
8. Cauliflower
9. Lettuce, any type
10. Swiss chard
11. Cucumbers, any type (3)
12. Squash, zucchini for eating
13. Squash, zucchini, largest
14. Squash, any other type
15. Pumpkin, any type
16. Melons, any type
17. Peppers, any type
18. Tomatoes, cherry or grape (3)
19. Tomatoes, any other type (3)
20. Potatoes, any type (3)
21. Onions, any type
22. Garlic
23. Carrots, any type
24. Beets, any type (3)
25. Radishes (3)
26. Herbs, any type



**NORTHWESTERN  
MICHIGAN  
FAIR**

---

**4-H**



**Youth Classes**



# 4-H YOUTH PROGRAM

## CODE OF CONDUCT

Youth participation in any 4-H Livestock Council activity must follow:

### **4-H Members will:**

1. Show respect for, and cooperate with, fellow members, volunteers, and staff.
2. Follow 4-H policies and procedures (including 4-H Livestock Council procedures) when participating in any 4-H sponsored event.
3. Under no circumstances, sell or consume alcohol or possess, sell or use controlled substances at an MSU Extension 4-H youth activity or event.
4. Under no circumstances attend or participate in an MSU Extension 4-H youth activity or event under the influence of alcohol and/or controlled substances including tobacco, electronic cigarettes, vapes, etc.
5. Under no circumstances bring dangerous or unauthorized materials (such as explosives, weapons or similar items) to an MSU Extension 4-H youth activity or event.
6. Under no circumstances, commit or threaten violence toward any individual, group, the 4-H Livestock Council, or the Northwestern Michigan Fair Board.
7. Abstain from harassment or bullying of another participant, volunteer, or staff member (either in face to face interactions, through social media or other communication venues), particularly when the behavior is disrespectful as regards to a person's gender, race, age, sexual orientation, religion, national origin, disability or appearance.
8. Not cheat or falsely represent efforts related to 4-H project activities.

### **Any participant who knowingly violates this Code of Conduct is subject to discipline that may include:**

1. Removal from the activity/event he or she is participating in.
2. Disqualification from some or all 4-H Livestock Council activities including auction for the following year.
3. Contact of Law Enforcement authorities if youth are in possession of or under the influence of alcohol and/or controlled substances including tobacco, electronic cigarettes, etc.
4. Seniors not being permitted to return the next year & participate in the 4-H Livestock program or auction as a "Super Senior".
5. During the week of fair, the NWMI Fair Board members have the right to discipline as they see fit in compliance with the NWMI Fair policies and rules as posted and printed in the current year's Premium Book.

## 2024 Northwest Michigan 4-H Livestock Council Executive Board

- Keri Bancroft - *President*
- Nicki Brown - *Vice President*
- Katrina Grose - *Treasurer*
- Leslie Campbell - *Deputy Treasurer*
- Amber Pomper - *Secretary*

### **SPECIES CHAIRS**

#### **Dairy Feeders: *Greg Bancroft***

*Assistant: Rick Talliue & Andrea Bedrick*

#### **Dogs: *Gretchen Sauvage***

#### **Goats: *Robin Gildner***

*Assistant: Chad Gildner*

#### **Horses: *Mandy DePuy***

*Assistant: Alisa Forton*

#### **Junior Beef: *Amanda Wilkins***

*Assistant: Terry Wilkins & Trevor Alpers*

#### **Lambs: *Shayna Conger***

*Assistant: Clayton Porter*

#### **Large Beef: *Haven Robinson***

*Assistant: Haven Bouwens*

#### **Llamas & Alpacas: *Kathy Easter***

*Assistant: Renee Hobbins*

#### **Poultry: *Lynn Henning***

*Assistant: Gwyn Carter*

#### **Rabbits & Cavies: *Lisa Ralph***

#### **Swine: *Jennifer Davis***

*Assistant: Jodi Ortega*

#### **Differently-Abled: *Beth Stephens & Rosie Belles***

*Assistant: Allison Wittkopp & Jen Stephens*



# 4-H ANIMAL EXHIBITS

**PLEASE BE SURE YOU HAVE READ THROUGH ALL OF THE RULES THROUGHOUT THIS BOOK.**

**ALL EXHIBITORS MUST ABIDE BY THE RULES POSTED IN THE LIVESTOCK COUNCIL'S POLICY & PROCEDURE BOOKS  
PLEASE REFER TO:  
[www.northwestmichiganlivestockcouncil.org](http://www.northwestmichiganlivestockcouncil.org)**

## DEPARTMENT 2 – 4-H DAIRY

*Species Chair – Greg Bancroft  
Assistant Species Chair – Rick Tallieu  
Administrative Species Chair - Andrea Bedrick*

### SECTION 1: 4-H DAIRY BEEF MARKET

- Classes are determined by weight and the Species Chair reserves the right to arrange classes as numbers see fit.
- Exhibitor's animals are placed in each class at the discretion of the judge.
- Ribbons are not awarded in the individual weight classes.
- Final placing determines the auction line-up.
- In the final placings, Grand & Reserve Champions and exhibitors placed 3rd - 6th receive rosettes and those placed 7th-15th receive straight ribbons. All the remaining exhibitors receive participation ribbons

1. Market Dairy Beef
2. Grand & Reserve Champion Market Dairy Beef – Exhibitors are determined by the judge. You do NOT need to register for this class. Rosettes are awarded to winners. The Grand Champion also receives a medal.

### SECTION 2: 4-H DAIRY BEEF SHOWMANSHIP

- 4-H age is used as a guide to arrange classes. Species Chair reserves the right to split or combine classes as the numbers see fit. In some cases, exhibitors may be moved based on their experience if necessary to accommodate class sizes.
- Exhibitors placed 1st – 6th in each class receive rosette ribbons.

1. Dairy Beef Showmanship 13-19
2. Grand & Reserve Champion Dairy Beef Showmanship – Exhibitors are determined by the judge. You do NOT need to register for this class. Rosettes are awarded to winners. The Grand Champion also receives a medal.

### SECTION 3: 4-H DAIRY FEEDER MARKET

- Classes are determined by weight and the Species Chair reserves the right to arrange classes as numbers see fit.
- Exhibitor's animals are placed in each class at the discretion of the judge.
- Ribbons are not awarded in the individual weight classes.
- Final placing determines the auction line-up.
- In the final placings, Grand & Reserve Champions and exhibitors placed 3rd - 6th receive rosettes and those placed 7th-15th receive straight ribbons. All the remaining exhibitors receive participation ribbons

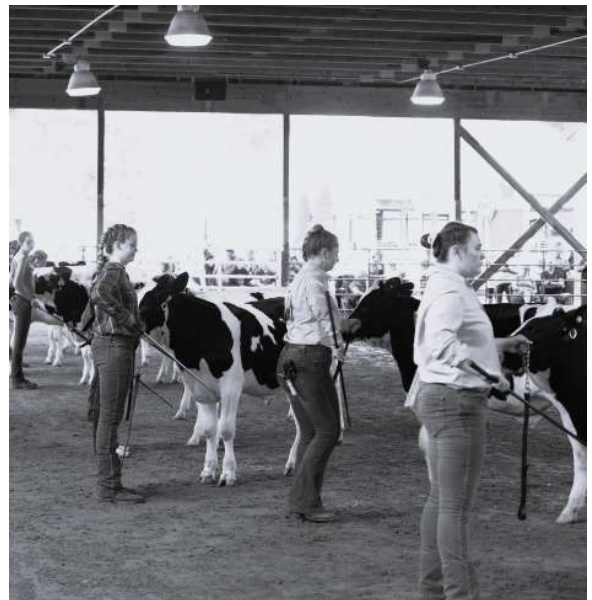
### SECTION 3: 4-H DAIRY FEEDER MARKET CONTINUED

1. Market Dairy Feeder
2. Grand & Reserve Champion Market Dairy Feeder - Exhibitors are determined by the judge. You do NOT need to register for this class. Rosettes are awarded to winners. The Grand Champion also receives a medal.

### SECTION 4: 4-H DAIRY FEEDER SHOWMANSHIP

- 4-H age is used as a guide to arrange classes. Species Chair reserves the right to split or combine classes as the numbers see fit. In some cases, exhibitors may be moved based on their experience if necessary to accommodate class sizes.
- Exhibitors placed 1st – 6th in each class receive rosette ribbons.

1. Senior Dairy Feeder Showmanship
2. Intermediate Dairy Feeder Showmanship
3. Junior Dairy Feeder Showmanship
4. Beginner Dairy Feeder Showmanship
5. Cloverbud Dairy Feeder Showmanship
2. Grand & Reserve Champion Dairy Feeder Showmanship – Exhibitors are determined by the judge. You do NOT need to register for this class. Rosettes are awarded to winners. The Grand Champion also receives a medal.



# 4-H ANIMAL EXHIBITS

## DEPARTMENT 4 – 4-H LARGE BEEF

Species Chair – Haven Bouwens  
Assistant Chairs – Crystal Breithaupt

### SECTION 1: 4-H STEER MARKET

- Classes are determined by weight and the Species Chair reserves the right to arrange classes as numbers see fit.
- Exhibitor's animals are placed in each class at the discretion of the judge.
- Straight ribbons 1st-6th place will be rewarded in each weight class.
- Final placing determines the auction line-up.
- In the final placings, Grand & Reserve Champions and exhibitors placed 3rd - 6th receive rosettes and those placed 7th-15th receive straight ribbons. All the remaining exhibitors receive participation ribbons

1. Market Steer
2. Grand & Reserve Champion Market Steer – Exhibitors are determined by the judge. You do NOT need to register for this class. Rosettes are awarded to winners. The Grand Champion also receives a medal.

### SECTION 2: 4-H HEIFER MARKET

- Classes are determined by weight and the Species Chair reserves the right to arrange classes as numbers see fit.
- Exhibitor's animals are placed in each class at the discretion of the judge.
- Straight ribbons 1st-6th place will be rewarded in each weight class.
- Final placing determines the auction line-up.
- In the final placings, Grand & Reserve Champions and exhibitors placed 3rd - 6th receive rosettes and those placed 7th-15th receive straight ribbons. All the remaining exhibitors receive participation ribbons

1. Market Heifer
2. Grand & Reserve Champion Market Heifer – Exhibitors are determined by the judge. You do NOT need to register for this class. Rosettes are awarded to winners. The Grand Champion also receives a medal.

### SECTION 3: 4-H LARGE BEEF SHOWMANSHIP

- 4-H age is used as a guide to arrange classes. Species Chair reserves the right to split or combine classes as the numbers see fit. In some cases, exhibitors may be moved based on their experience if necessary to accommodate class sizes.
  - Exhibitors placed 1st – 6th in each class receive rosette ribbons.
1. Advanced Senior Large Beef Showmanship: Ages 18-19
  2. Senior Large Beef Showmanship: Ages 17
  3. Intermediate Large Beef Showmanship: Age 16
  4. Junior Large Beef Showmanship: Age 15
  5. Pre-Junior Large Beef Showmanship: Age 14
  6. Beginner Large Beef Showmanship: Age 13
  7. Novice Large Beef Showmanship: Age 12
  8. Grand & Reserve Champion Large Beef Showmanship– Exhibitors are determined by the judge. You do NOT need to register for this class. Rosettes are awarded to winners. The Grand Champion also receives a medal.

## DEPARTMENT 6 – 4-H JUNIOR BEEF

Species Chair – Amanda Wilkins  
Assistant Species Chair – Terry Wilkins & Trevor Alpers

### SECTION 1: 4-H JUNIOR BEEF MARKET

- Classes are determined by weight and the Species Chair reserves the right to arrange classes as numbers see fit.
- Exhibitor's animals are placed in each class at the discretion of the judge.
- Straight ribbons 1st -6th place will be awarded in each weight class.
- Final placing determines the auction line-up.
- In the final placings, Grand & Reserve Champions and exhibitors placed 3rd - 6th receive rosettes and those placed 7th-15th receive straight ribbons. All the remaining exhibitors receive participation ribbons

1. Market Junior Beef Steer
2. Grand & Reserve Champion Market Junior Beef Steer– Exhibitors are determined by the judge. You do NOT need to register for this class. Rosettes are awarded to winners. The Grand Champion also receives a medal.
3. Market Junior Beef Heifer
4. Grand & Reserve Market Junior Beef Heifer - Exhibitors are determined by the judge. You do NOT need to register for this class. Rosettes are awarded to winners. The Grand Champion also receives a medal.
5. Overall Market Junior Beef - Exhibitors are determined by the judge and do NOT need to register for this class. Winner will receive a Best Overall Rosette.

### SECTION 2: 4-H JUNIOR BEEF SHOWMANSHIP

- 4-H age is used as a guide to arrange classes. Species Chair reserves the right to split or combine classes as the numbers see fit. In some cases, exhibitors may be moved based on their experience if necessary to accommodate class sizes.
- Exhibitors placed 1st – 6th in each class receive rosette ribbons.

1. Senior Junior Beef Showmanship: Ages 15-19
2. Intermediate Junior Beef Showmanship: Ages 13-14
3. Junior Junior Beef Showmanship: Age 12
4. Pre-Junior Junior Beef Showmanship: Age 11
5. Beginner Junior Beef Showmanship: Age 10
6. Rookie Junior Beef Showmanship: Age 9
7. Novice Junior Beef Showmanship: Age 8
8. Cloverbud Junior Beef Showmanship: Ages 5-7 Exhibitors will receive a Cloverbud ribbon.
9. Grand & Reserve Champion Junior Beef Showmanship – Exhibitors are determined by the judge. You do NOT need to register for this class. Rosettes are awarded to winners. The Grand Champion also receives a medal.



# 4-H ANIMAL EXHIBITS

## DEPARTMENT 8 – 4-H LAMB

*Species Chair – Shayna Conger  
Assistant Species Chair – Clayton Porter*

### SECTION 1: 4-H LAMB MARKET

- Classes are determined by weight and the Species Chair reserves the right to arrange classes as numbers see fit.
- Exhibitor's animals are placed in each class at the discretion of the judge.
- Ribbons are not awarded in the individual weight classes.
- Final placing determines the auction line-up.
- In the final placings, Grand & Reserve Champions and exhibitors placed 3rd - 6th receive rosettes and those placed 7th-15th receive straight ribbons. All the remaining exhibitors receive participation ribbons

1. Market Lamb
2. Grand & Reserve Champion Market Lamb – Exhibitors are determined by the judge. You do NOT need to register for this class. Rosettes are awarded to winners. The Grand Champion also receives a medal.

### SECTION 2: 4-H LAMB SHOWMANSHIP

- 4-H age is used as a guide to arrange classes. Species Chair reserves the right to split or combine classes as the numbers see fit. In some cases, exhibitors may be moved based on their experience if necessary to accommodate class sizes.
- Exhibitors placed 1st – 6th in each class receive rosette ribbons.

1. Senior Lamb Showmanship: Ages 16-19
2. Intermediate Lamb Showmanship: Ages 14-15
3. Junior Lamb Showmanship: Ages 11-13
4. Beginner Lamb Showmanship: Ages 8-10
5. Cloverbud Lamb Showmanship: Ages 5-7  
*Exhibitors will receive a Cloverbud ribbon.*
6. Grand & Reserve Champion Lamb Showmanship – Exhibitors are determined by the judge. You do NOT need to register for this class. Rosettes are awarded to winners. The Grand Champion also receives a medal.

## DEPARTMENT 10 – 4-H GOATS

*Species Chair – Robin Gildner  
Assistant Species Chair – Chad Gildner*

### SECTION 1: 4-H DAIRY GOAT BREED

- Species Chair reserves the right to arrange classes as numbers see fit.
  - Exhibitor's animals are placed in each class at the discretion of the judge.
  - Exhibitors placed 1st–6th in each class receive ribbons.
1. Dairy Doe (4-12 months)
  2. Dairy Doe (13-24 months)
  3. Senior Dairy Doe (> 24 months)
  4. Grand & Reserve Champion Dairy Doe – Exhibitors are determined by the judge. You do NOT need to register for this class. Rosettes are awarded to winners.

### SECTION 2: 4-H MEAT GOAT BREED

- Species Chair reserves the right to arrange classes as numbers see fit.
  - Exhibitor's animals are placed in each class at the discretion of the judge.
  - Exhibitors placed 1st–6th in each class receive ribbons.
5. Meat Breed Doe (4-12 months)
  6. Meat Breed Doe (13-24 months)
  7. Meat Breed Doe (> 24 months)
  8. Grand & Reserve Champion Meat Breed Doe – Exhibitors are determined by the judge. You do NOT need to register for this class. Rosettes are awarded to winners.

### SECTION 3: 4-H FIBER GOAT BREED

- Species Chair reserves the right to arrange classes as numbers see fit.
  - Exhibitor's animals are placed in each class at the discretion of the judge.
  - Exhibitors placed 1st–6th in each class receive ribbons.
9. Fiber Breed Doe (4-12 months)
  10. Fiber Breed Doe (13-24 months)
  11. Fiber Breed Doe (> 24 months)
  12. Grand & Reserve Champion Fiber Doe – Exhibitors are determined by the judge. You do NOT need to register for this class. Rosettes are awarded to winners.

### SECTION 4: OVERALL DOE (BEST OF SHOW)

- Exhibitor's animals are placed in each class at the discretion of the judge.
- The Grand and Reserve Champion Dairy, Meat and Fiber Does will be called back to compete for Overall Doe, Best of Show.
- You do NOT need to register for this class. Grand and Reserve Rosettes are award to the winners.

### SECTION 5: 4-H WETHER

- Species Chair reserves the right to arrange classes as numbers see fit.
  - Exhibitor's animals are placed in each class at the discretion of the judge.
  - Exhibitors placed 1st–6th in each class receive ribbons.
13. Wether (4-12 months)
  14. Wether (13-24 months)
  15. Wether (> 24 months)
  16. Grand & Reserve Champion Wether – Exhibitors are determined by the judge. You do NOT need to register for this class. Rosettes are awarded to winners.



# 4-H ANIMAL EXHIBITS

## SECTION 6: 4-H BRED & OWNED DOE

- *Species Chair reserves the right to arrange classes as numbers see fit.*
  - *Exhibitor's animals are placed in each class at the discretion of the judge.*
  - *Exhibitors placed 1st–6th in each class receive ribbons.*
  - *The doe must have been bred by, born on and currently owned by the exhibitor/exhibitor's family farm.*
17. Doe (4-12 months)
  18. Doe (13-24 months)
  19. Doe (>24 months)
  - 20 Grand & Reserve Bred & Owned Doe - *Exhibitors are determined by the judge. You do NOT need to register for this class. Rosettes are awarded to winners.*

## SECTION 7: 4-H SPECIALTY CLASSES

- *Species Chair reserves the right to arrange classes as numbers see fit.*
  - *Exhibitor's animals are placed in each class at the discretion of the judge.*
  - *Exhibitors placed 1st–6th in each class receive ribbons.*
21. Dam & Daughter
  22. Talent & Costume Parade – Non-judged event

## SECTION 8: 4-H GOAT MARKET

- *Classes are determined by weight and the Species Chair reserves the right to arrange classes as numbers see fit.*
  - *Exhibitor's animals are placed in each class at the discretion of the judge.*
  - *Ribbons are not awarded in the individual weight classes.*
  - *Final placing determines the auction line-up, not the individual weight class placing.*
  - *In the final placings, Grand & Reserve Champions and exhibitors placed 3rd - 6th receive rosettes and those placed 7th-15th receive straight ribbons. All the remaining exhibitors receive participation ribbons*
23. Market Goat
  24. Grand & Reserve Champion Market Goat – *Exhibitors are determined by the judge. You do NOT need to register for this class. Rosettes are awarded to winners. The Grand Champion also receives a medal.*

## SECTION 9: 4-H GOAT SHOWMANSHIP

- *4-H age is used as a guide to arrange classes. Species Chair reserves the right to split or combine classes as the numbers see fit. In some cases, exhibitors may be moved based on their experience if necessary to accommodate class sizes.*
  - *Exhibitor's animals are placed in each class at the discretion of the judge.*
  - *Exhibitors placed 1st – 6th in each class receive rosette ribbons.*
25. Senior Goat Showmanship: Ages 16-19
  26. Intermediate Goat Showmanship: Ages 13-15
  27. Beginner Goat Showmanship: Ages 8-12

## SECTION 9: 4-H GOAT SHOWMANSHIP CONT.

28. Cloverbud Goat Showmanship: Ages 5-7 *Exhibitors will receive a Cloverbud ribbon.*
29. Grand & Reserve Champion Goat Showmanship – *Exhibitors are determined by the judge. You do NOT need to register for this class. Rosettes are awarded to winners. The Grand Champion also receives a medal.*

## SECTION 10: MY GOAT & ME

- *A poster documentary including pictures, drawings, stories, and information about you and your adventures with your goat. BE CREATIVE!! (This is NOT an entry for your record book and will be displayed at fair.)*
  - *Exhibitors will be asked to present their project during a one-on-one interview at fair. The Specie Chair will assign you a time slot and location for the interview. Please hold on to your project until your scheduled interview and be sure to dress appropriately.*
  - *Ribbons will be awarded for 1st-3rd place for each age division. Cloverbuds will receive cloverbud ribbons.*
30. Senior: Ages 16-19
  31. Intermediate: Ages 13-15
  32. Beginner: Ages 8-12
  33. Cloverbud: Ages 5-7

## SECTION 11: 4-H PACK GOAT OBSTACLE COURSE

- *Species Chair reserves the right to arrange classes as numbers see fit.*
  - *Exhibitor's animals are placed in each class at the discretion of the judge.*
  - *Exhibitors placed 1st–6th in each class receive rosette ribbons.*
34. Advanced Pack Obstacle (Goat experience: 2 years +)
  35. Intermediate Pack Obstacle (Goat experience: 1-2 years)
  36. Beginner Pack Obstacle (Goat experience: < 1 year)
  37. Cloverbud Pack Obstacle (Youth Ages 5-7)
  38. Grand & Reserve Champion Pack Goat Obstacle Course – *Exhibitors are determined by the judge. You do NOT need to register for this class. Rosettes are awarded to winners.*
  39. Pack String (2 goats or more strung together, completing the course at the same time.)

## SECTION 12: 4-H DRAFT GOAT OBSTACLE COURSE

- *Species Chair reserves the right to arrange classes as numbers see fit.*
  - *Exhibitor's animals are placed in each class at the discretion of the judge.*
  - *Exhibitors placed 1st–6th in each class receive rosette ribbons.*
40. Advanced Draft (Goat experience: 2 years +)
  41. Intermediate Draft (Goat experience: 1-2 years)
  42. Beginner Draft (Goat experience: < 1 year)
  43. Multi-Hitch Draft (2 intermediate and/or advanced goats, harnessed to pull a cart)
  44. Grand & Reserve Champion Draft Goat Obstacle Course – *Exhibitors are determined by the judge. You do NOT need to register for this class. Rosettes are awarded to winners.*

# 4-H ANIMAL EXHIBITS

## DEPARTMENT 12 – 4-H SWINE

*Species Chair – Jennifer Davis*

### SECTION 1: 4-H SWINE MARKET

- *Classes are determined by weight and the Species Chair reserves the right to arrange classes as numbers see fit.*
- *Exhibitor's animals are placed in each class at the discretion of the judge.*
- *Ribbons are not awarded in the individual weight classes.*
- *Final placing determines the auction line-up.*
- *In the final placings, Grand & Reserve Champions and exhibitors placed 3rd - 6th receive rosettes and those placed 7th-15th receive straight ribbons. All the remaining exhibitors receive participation ribbons*

1. Market Swine
2. Grand & Reserve Champion Market Swine – *Exhibitors are determined by the judge. You do NOT need to register for this class. Rosettes are awarded to winners. The Grand Champion also receives a medal.*

### SECTION 2: 4-H SWINE SHOWMANSHIP

- *4-H age is used as a guide to arrange classes. Species Chair reserves the right to split or combine classes as the numbers see fit. In some cases, exhibitors may be moved based on their experience if necessary to accommodate class sizes.*
- *Exhibitors placed 1st – 6th in each class receive rosette ribbons.*

1. Swine Showmanship: Ages 18-19
2. Swine Showmanship: Age 17
3. Swine Showmanship: Age 16
4. Swine Showmanship: Age 15
5. Swine Showmanship: Age 14
6. Swine Showmanship: Age 13
7. Swine Showmanship: Age 12
8. Swine Showmanship: Age 11
9. Swine Showmanship: Age 10
10. Swine Showmanship: Age 9
11. Swine Showmanship: Age 8
12. Cloverbud Swine Showmanship: Ages 5-7  
*Exhibitors will receive a Cloverbud ribbon.*
13. Grand & Reserve Champion Swine Showmanship – *Exhibitors are determined by the judge. You do NOT need to register for this class. Rosettes are awarded to winners. The Grand Champion also receives a medal.*

## DEPARTMENT 14 – 4-H POULTRY

*Species Chair – Lynn Henning*  
*Assistant Species Chair – Gwyn Carter*

### DEPARTMENT RULES:

- All poultry will be judged by the American Standard of Perfection and Bantam Breed of Perfection.
- Every entry will be examined for external parasites. Poultry showing any sign of disease or parasites will be rejected.
- 4-H Poultry may not be judged in open.

- The poultry terms as follows:
  - Cock and hen are birds one year old and over
  - Cockerel and pullet are birds less than one year
  - Pair: 1 male and female of same breed and age
  - All Breed Class Poultry must be one year or older to be judged.
- All poultry should be part of a project during the current year.
- Entries shall be banded prior to cage assignment.
- Poultry entered singly cannot compete for Pair or Pens.
- Each 4-H member is limited to 2 entries per class.
- Cloverbud class has been established for developing showmanship skills on a non-competitive basis. Participation ribbons only will be awarded.
- ILT vaccinated poultry will not be accepted for entry.
- Documentation will be either by one of the following:
  - ◇ Hatchery source documentation
  - ◇ Entire flock or individual bird test report USDA VA 9-2 or VS 9-3
  - ◇ Michigan Department of Agriculture pullorum test form with owner certificate.
  - ◇ Statement provided by pullorum tester and/or accredited veterinarian.
  - ◇ Owner certification statement with all of the above forms; providing verification of birds being presented for pullorum test and isolation form unknown status poultry since pullorum test negative.
- Pullorum testing will be available at the Fairgrounds on the first Saturday of Fair from 10:00am to 2:00pm. There will be no charge for pullorum testing.
- Only poultry from Antrim, Benzie, Grand Traverse, Kalkaska and Leelanau Counties may be shown.
- Exhibitors must be 5 years of age or older. Age computed from January 1st of current year.
- Exhibitors 5-7 years of age must be accompanied by a parent or responsible adult in the show area.
- 4-H members may remove birds from exhibition coop for the purpose of showmanship at the time of showmanship only!
- Poultry showing any symptoms of disease will be excluded from exhibition.
- Stock must be entered in the name of the actual owner(s).
- Judges may refuse to award premiums to any bird or animal that does not possess sufficient merit.
- Poultry cannot be shown in both 4-H and open.
- All waterfowls will be banded by the Fair Association before exhibiting.
- **Exhibitors are limited to 2 entries in any one class.**
- Not allowed due to DNR regulations and permit requirement- Hungarian Partridge, Ruffed Grouse, Sharp Tailed Grouse, Wild Turkey, Ducks (all North American species, except Mallards), Geese (Canada subspecies and Blue-Snow Geese), Pheasant (Ringneck, Sichuan and look alikes from the Genius Phasianus), Quail (Bobwhite).

# 4-H ANIMAL EXHIBITS

## DEPARTMENT RULES CONTINUED:

- The Specie Chair reserves the right to arrange classes as numbers see fit.
- Exhibitor's animals are placed in each class at the discretion of the judge.
- Final placing determines the auction line-up.
- In the Final placing, after the Grand & Reserve Champion class exhibitors placed 3rd - 6th receive rosettes. All the remaining exhibitors receive participation ribbons.

## SECTION 1: 4-H BREED STANDARD CHICKEN

- Exhibitor's animals are placed in each class at the discretion of the judge.
- Exhibitors placed 1st-6th in each class receive ribbons.

1. Cock
2. Hen
3. Cockerel
4. Pullet
5. Pair
6. Hen & Chicks, 1 hen & 3 chicks
7. Grand & Reserve Champion Breed Standard Chicken – Exhibitors are determined by the judge. You do NOT need to register for this class. Rosettes are awarded to winners.

## SECTION 2: 4-H MARKET MEAT CHICKENS

- Final placing determines the auction line-up.
- Grand & Reserve Champions and exhibitors placed 3rd - 6th receive rosettes.

1. Market Meat Chickens
2. Grand & Reserve Champion Market Meat Chickens – Exhibitors are determined by the judge. You do NOT need to register for this class. Rosettes are awarded to winners. The Grand Champion also receives a medal.

## SECTION 3: 4-H MARKET CORNISH GAME HENS

- Final placing determines the auction line-up.
- Grand & Reserve Champions and exhibitors placed 3rd - 6th receive rosettes.

1. Market Cornish Game Hens
2. Grand & Reserve Champion Market Cornish Game Hens – Exhibitors are determined by the judge. You do NOT need to register for this class. Rosettes are awarded to winners. The Grand Champion also receives a medal.

## SECTION 4: 4-H BREED BANTAM CHICKEN

- Exhibitor's animals are placed in each class at the discretion of the judge.
- Exhibitors placed 1st-6th in each class receive ribbons.

1. Cock
2. Hen
3. Cockerel
4. Pullet

## SECTION 4: 4-H BREED BANTAM CHICKEN CONT.

5. Pair
6. Hen & Chicks, 1 hen & 3 chicks
7. Grand & Reserve Champion Breed Bantam Chicken – Exhibitors are determined by the judge. You do NOT need to register for this class. Rosettes are awarded to winners.

## SECTION 5: 4-H MARKET PRODUCTION PULLETS

- Final placing determines the auction line-up.
- Grand & Reserve Champions and exhibitors placed 3rd - 6th receive rosettes.

1. Market Production Pullets
2. Grand & Reserve Champion Market Production Pullets – Exhibitors are determined by the judge. You do NOT need to register for this class. Rosettes are awarded to winners. The Grand Champion also receives a medal.

## SECTION 6: 4-H BREED TURKEYS

- Exhibitor's animals are placed in each class at the discretion of the judge.
- Exhibitors placed 1st-6th in each class receive ribbons.

1. Aged Tom
2. Aged Hen
3. Young Tom
4. Young Hen
5. Pair
6. Grand & Reserve Champion Breed Turkeys – Exhibitors are determined by the judge. You do NOT need to register for this class. Rosettes are awarded to winners.

## SECTION 7: 4-H MARKET TURKEYS

- Final placing determines the auction line-up.
- Grand & Reserve Champions and exhibitors placed 3rd - 6th receive rosettes.

1. Market Toms
2. Market Hens
3. Grand & Reserve Champion Market Turkeys – Exhibitors are determined by the judge. You do NOT need to register for this class. Rosettes are awarded to winners. The Grand Champion also receives a medal.

## SECTION 8: 4-H BREED DUCKS

- Exhibitor's animals are placed in each class at the discretion of the judge.
- Exhibitors placed 1st-6th in each class receive ribbons.

1. Aged Drake
2. Aged Duck
3. Young Drake
4. Young Duck

# 4-H ANIMAL EXHIBITS

## SECTION 8: 4-H BREED DUCKS CONTINUED:

5. Pair
6. Grand & Reserve Champion Breed Duck – Exhibitors are determined by the judge. You do NOT need to register for this class. Rosettes are awarded to winners.

## SECTION 9: 4-H MARKET DUCKS

- Final placing determines the auction line-up.
  - Grand & Reserve Champions and exhibitors placed 3rd - 6th receive rosettes.
1. Market Ducks
  2. Grand & Reserve Champion Market Ducks – Exhibitors are determined by the judge. You do NOT need to register for this class. Rosettes are awarded to winners. The Grand Champion also receives a medal.

## SECTION 10: 4-H BREED GEESE

- Exhibitor's animals are placed in each class at the discretion of the judge.
  - Exhibitors placed 1st–6th in each class receive ribbons.
1. Aged Gander
  2. Aged Goose
  3. Young Gander
  4. Young Goose
  5. Pair
  6. Grand & Reserve Champion Breed Goose – Exhibitors are determined by the judge. You do NOT need to register for this class. Rosettes are awarded to winners.

## SECTION 11: 4-H MARKET GEESE

- Final placing determines the auction line-up.
  - Grand & Reserve Champions and exhibitors placed 3rd - 6th receive rosettes.
1. Market Geese
  2. Grand & Reserve Champion Market Geese – Exhibitors are determined by the judge. You do NOT need to register for this class. Rosettes are awarded to winners. The Grand Champion also receives a medal.

## SECTION 12: 4-H BREED PIGEONS

- Exhibitor's animals are placed in each class at the discretion of the judge.
  - Exhibitors placed 1st–6th in each class receive ribbons.
1. Old Cock
  2. Old Hen
  3. Young Cock
  4. Young Hen
  5. Old Pair
  6. Young Pair
  7. Grand & Reserve Champion Breed Pigeon – Exhibitors are determined by the judge. You do NOT need to register for this class. Rosettes are awarded to winners.

## SECTION 13: EGGS

- Exhibitor's animals are placed in each class at the discretion of the judge.
  - Exhibitors placed 1st–6th in each class receive ribbons.
1. Best Dozen Brown Standard
  2. Best Dozen White Standard
  3. Best Dozen Other Standard
  4. Best Dozen Brown Bantam
  5. Best Dozen White Bantam
  6. Best Dozen Other Bantam
  7. Best Dozen Quail
  8. Best Turkey 1/2 Dozen
  9. Best Waterfowl 1/2 Dozen
  10. Best Overall Eggs - Exhibitors are determined by the judge. You do not need to register for this class. Rosette awarded to the winner.

## SECTION 14: 4-H POULTRY SHOWMANSHIP

- 4-H age is used as a guide to arrange classes. Species Chair reserves the right to split or combine classes as the numbers see fit. In some cases, exhibitors may be moved based on their experience if necessary to accommodate class sizes.
  - Exhibitors placed 1st – 6th in each class receive rosette ribbons.
1. Senior Poultry Showmanship: Ages 16-19
  2. Intermediate Poultry Showmanship: Ages 14-15
  3. Junior Poultry Showmanship: Ages 12-13
  4. Pre-Junior Poultry Showmanship: Ages 10-11
  5. Beginner Poultry Showmanship: Ages 8-9
  6. Cloverbud Poultry Showmanship: Ages 5-7  
Exhibitors will receive a Cloverbud ribbon.
  7. Grand & Reserve Champion Poultry Showmanship – Exhibitors are determined by the judge. You do NOT need to register for this class. Rosettes are awarded to winners. The Grand Champion also receives a medal.

## DEPARTMENT 16 –

## 4-H RABBITS & CAVIES

Species Chair – Lisa Ralph

## RABBIT BREED CLASS RULES:

- All animals showing signs of disease will be removed from the grounds.
- All animals must be tattooed and nails properly trimmed before entering the grounds no tagging on grounds permitted.
- All animals will be judged by ARBA standards.
- Breed and market exhibitors are required to do Rabbit Showmanship.
- No 4-H rabbits entered in breed or market can enter the same rabbit in open classes.
- All animals brought to the fair must be entered and shown with registrations fees paid, including bunnies.

# 4-H ANIMAL EXHIBITS

## SECTION 1: 4-H BREED RABBIT MATURING OVER 10 LBS (FRENCH LOP, NEW ZEELAND, SATIN, ETC)

- Exhibitor's animals are placed in each class at the discretion of the judge.
  - Exhibitors placed 1st–3rd in each class will be awarded A, B, or C ribbons.
1. Senior Buck (over 8 months)
  2. Senior Doe (over 8 months)
  3. Intermediate Buck (6-8 months)
  4. Intermediate Doe (6-8 months)
  5. Junior Buck (3-6 months)
  6. Junior Doe (3-6 months)

## SECTION 2: 4-H BREED RABBIT MATURING LESS THAN 10 LBS (MINI LOP, HOLLAND LOP, DWARFS, ETC)

- Exhibitor's animals are placed in each class at the discretion of the judge.
  - Exhibitors placed 1st–3rd in each class will be awarded A, B, or C ribbons.
1. Senior Buck (over 6 months)
  2. Senior Doe (over 6 months)
  3. Junior Buck (under 6 months)
  4. Junior Doe (under 6 months)
  5. Best of Breed – Exhibitors are determined by the judge. You do NOT need to register for this class. Rosettes are awarded to winners.
  6. Best of Breed Opposite– Exhibitors are determined by the judge. You do NOT need to register for this class. Rosettes are awarded to winners.

## SECTION 3: 4-H MARKET RABBITS

- Exhibitor's animals are placed in each class at the discretion of the judge.
  - Ribbons are not awarded in the individual classes.
  - Final placing determines the auction line-up.
  - In the final placings, Grand & Reserve Champions and exhibitors placed 3rd - 6th receive rosettes and those placed 7th-15th receive straight ribbons. All the remaining exhibitors receive participation ribbons.
1. Market Single Fryer
  2. Market Single Roaster
  3. Market Pen of 3 Rabbits
  4. Grand & Reserve Champion Market Rabbit – Exhibitors are determined by the judge. You do NOT need to register for this class. Rosettes are awarded to winners. The Grand Champion also receives a medal.

## SECTION 4: 4-H RABBIT SHOWMANSHIP

- 4-H age is used as a guide to arrange classes. Species Chair reserves the right to split or combine classes as the numbers see fit. In some cases, exhibitors may be moved based on their experience if necessary to accommodate class sizes.
  - Exhibitors placed 1st – 6th in each class receive rosette ribbons.
1. Senior Rabbit Showmanship: Ages 17-19
  2. Advanced Rabbit Showmanship: Ages 15-16
  3. Intermediate Rabbit Showmanship: Age 14
  4. Beginner Rabbit Showmanship: Age 13

## SECTION 3: 4-H RABBIT SHOWMANSHIP CONT.

5. Pre-Beginner Rabbit Showmanship: 12
6. Junior Rabbit Showmanship: Age 11
7. Novice Rabbit Showmanship: Age 10
8. Pre-Novice Rabbit Showmanship: Ages 8-9
9. Cloverbud Rabbit Showmanship: Ages 5-7  
*Exhibitors will receive a Cloverbud ribbon.*
10. Grand & Reserve Champion Rabbit Showmanship – Exhibitors are determined by the judge. You do NOT need to register for this class. Rosettes are awarded to winners. The Grand Champion also receives a medal.

## SECTION 5: 4-H RABBIT SKILLATHON

- 6 or more member teams.
  - Exhibitors placed 1st – 6th in each class receive rosette ribbons.
1. Senior: Ages 17-19
  2. Advanced: Ages 15-16
  3. Intermediate: Age 14
  4. Beginner: Age 13
  5. Pre-Beginner: Age 12
  6. Junior: Age 11
  7. Novice: Age 10
  8. Pre-Novice: Ages 8-9
  9. Cloverbud: Ages 5-7

## SECTION 5: 4-H RABBIT SPECIAL CLASSES

- Species Chair reserves the right to arrange classes as numbers see fit.
  - Exhibitor's animals are placed in each class at the discretion of the judge.
  - Exhibitors placed 1st – 6th in each class receive rosette ribbons.
1. Rabbit Agility - This class will be open as all first year.
  2. Adult 4-H Parent in Leader Showmanship Class - One class only. Exhibitor must be signed up to participate.

## SECTION 6: 4-H RABBIT POSTER CLASS

- Rabbit poster and project area includes posters having to do with rabbit health and nutrition. Projects can be small artwork pieces. Species Chair reserves the right to arrange classes as numbers see fit.
  - Exhibitor's animals are placed in each class at the discretion of the judge.
1. Rabbit Poster Class

## CAVY BREED CLASS RULES:

- All animals showing signs of disease will be removed from the grounds.
- Sows heavy with young should not be shown.
- All cages must have an escape proof lid. No aquariums.
- All animals must be tagged, and nails properly trimmed.
- All animals will be judged by ARBA standards.
- All exhibitors are required to participate in Cavy Showmanship.
- No 4-H cavies entered in breed can be entered in the same open classe.
- All animals brought to the fair must be entered and shown with registrations fees paid, including babies.

# 4-H ANIMAL EXHIBITS

## SECTION 6: 4-H BREED CAVY CLASSES

- Exhibitor's animals are placed in each class at the discretion of the judge.
  - Exhibitors placed 1st-3rd in each class will be awarded A, B, or C ribbons.
1. Senior Boar (over 6 months or over 32 ounces)
  2. Senior Sow (over 6 months or over 32 ounces)
  3. Intermediate Boar (4-6 months or 22-32 ounces)
  4. Intermediate Sow (4-6 months or 22-32 ounces)
  5. Junior Boar (under 4 months or 12-22 ounces)
  6. Junior Sow (under 4 months or 12-22 ounces)
  7. Best of Breed & Reserve Breed- Exhibitors are determined by the judge. You do NOT need to register for this class. Rosettes are awarded to winners.

## SECTION 4: 4-H CAVY SHOWMANSHIP

- 4-H age is used as a guide to arrange classes. Species Chair reserves the right to split or combine classes as the numbers see fit. In some cases, exhibitors may be moved based on their experience if necessary to accommodate class sizes.
  - Exhibitors placed 1st - 6th in each class receive rosette ribbons.
1. Senior Cavy Showmanship: Ages 16-19
  2. Intermediate Cavy Showmanship: Ages 14-15
  3. Junior Cavy Showmanship: Ages 12-13
  4. Novice Cavy Showmanship: Ages 10-11
  5. Beginner Cavy Showmanship: Ages 8-9
  6. Cloverbud Cavy Showmanship: Ages 5-7  
Exhibitors will receive a Cloverbud ribbon.
  7. Grand & Reserve Champion Cavy Showmanship - Exhibitors are determined by the judge. You do NOT need to register for this class. Rosettes are awarded to winners. The Grand Champion also receives a medal.

## DEPARTMENT 18 - 4-H HORSE & PONY

Species Chair - Mandy DePuy  
Assistant Species Chair - Alisa Forton

### DEPARTMENT RULES:

- Member must be registered with the Livestock Council by the June livestock council meeting. 4-Hers may bring a total of two horses to exhibit in 4-H. Categories include: Mini/Pony, Pleasure (Saddle Horse) or Draft. 4-Hers may not bring two horses in the same category to exhibit. All stall/class fees apply to each horse.
- All classes will be judged using Michigan 4-H Project Show Rules and Regulations.
- Classes with more than 16 entries will be divided in 2 random splits. Each split will be judged and placed separately. Classes with 3 or less exhibitors may be combined at the Species chair's discretion.
- Showmanship, Trail, Equitation and Horsemanship will run patterns. An order of go will be used in pattern classes if needed to keep the flow of the show.
- Exhibitors may ride in ONE division (Walk Only, Miniature Horse/ Small Equine, Novice, Rookie, Gymkhana, Ages 8-12, Ages 13-15, Ages 16-19) per horse/rider combination for the entire show.
- Novice division is for riders in first year of showing (cloverbud years do not count) Riders aged 8-10 years old may choose to ride in the novice or rookie division. Novice classes are walk-trot only.

### DEPARTMENT RULES CONTINUED:

- A Rookie Rider is a second-year walk/trot rider (Cloverbud years do not count) or is a new rider/horse combination. Rider/horse combination may not have won grand or reserve in the rookie division in past years.
- Points will be traced per division for High Point & Reserve Trophy.
  - High Point divisions are: Walk Only, Miniature Horse/Small Equine, Novice, Rookie, Gymkhana, Ages 8-12, Ages 13-15, Ages 16-19, Speed WTC, Speed WT.
- All riders must wear an approved helmet at all times while riding, no matter the discipline.
- Walk only riders may be on a horse's lead (which is attached to a halter), have a registered volunteer or their parent/guardian next to the horse with no attachment, or be riding alone. Side-walkers are also allowed.
- Cloverbud, Novice, or Rookie may use any legal bit that parent or leader feels is safe for the child regardless of the horse's age. Bit must be appropriate for discipline.
- The 4-H exhibitor or owner of the horse shall only handle the horse unless prior approval is given by the club leader and the 4-H Horse Species Chair.
- Youth ages 5 through 7 may be involved with a horse but they must be directly assisted one-on-one by a registered volunteer who is on the ground holding the horse's lead (which is attached to a halter) to maximize safety. During exercise times fair week please use your best judgement and do what is best for the child. Species Chair and Assistant reserve the right to only allow Cloverbuds to ride directly assisted one-on-one by a registered volunteer who is on the ground holding the horse's lead if safety calls for it.
- 4-H Cloverbuds who are 7 may be involved with a horse, assisted by an adult registered volunteer who is in the ring with the participant at all times. Walk/ trot experiences may be an appropriate activity for children in this age group. This applies during exercise times as well as shows during fair.
- 4-H Cloverbuds must wear ASTM- or SEI- approved helmets for all 4-H Cloverbud horse experiences (including showmanship)
- Riding with halter or lead rope, riding bareback, or riding double is prohibited.
- 4-H Horses attending the Northwestern Michigan Fair must show proof of current Coggins, prior to unloading of the animal.

## SECTION 1: 4-H HORSE HALTER

- 4-H age is used as a guide to arrange classes. Species Chair reserves the right to split or combine classes as the numbers see fit. In some cases, exhibitors may be moved based on their experience if necessary to accommodate class sizes.
  - Exhibitors placed 1st - 6th in each class receive rosette ribbons.
1. Stock Type Geldings
  2. Stock Type Mares
  3. Pleasure Type Mares & Geldings
  4. Mini & Pony
  5. Draft Horse
  6. Grand and Reserve Horse Halter - First and second placings from classes 1-6 are eligible for this class. You do NOT need to register for this class.

# 4-H ANIMAL EXHIBITS

## SECTION 2: 4-H HORSE SHOWMANSHIP

- 4-H age is used as a guide to arrange classes. Species Chair reserves the right to split or combine classes as the numbers see fit. In some cases, exhibitors may be moved based on their experience if necessary to accommodate class sizes.
- Exhibitors placed 1st – 6th in each class receive rosette ribbons.

1. Showmanship: Ages 16-19
2. Showmanship: Ages 13-15
3. Showmanship: Ages 8-12
4. Showmanship Gymkhana - WTC
5. Rookie Showmanship
6. Novice Showmanship
7. Walk Only Showmanship: Ages 8-19
8. Miniature Horse/Small Equine Showmanship (May not compete in any other showmanship classes)
9. Cloverbud Showmanship: Ages 5-7  
*Exhibitors will receive a Cloverbud ribbon.*
10. Grand & Reserve Champion Horse Showmanship –  
*Exhibitors are determined by the judge. You do NOT need to register for this class. Rosettes are awarded to winners. The Grand Champion also receives a medal and a horse neck ribbon.*

## SECTION 3: 4-H HORSE ENGLISH EQUITATION

- Species Chair reserves the right to split or combine classes as the numbers see fit.
- Exhibitors placed 1st – 6th in each class receive rosette ribbons.

1. English Equitation: Ages 16-19
2. English Equitation: Ages 13-15
3. English Equitation: Ages 8-12
4. English Equitation Gymkhana - WTC
5. Rookie English Equitation
6. Novice English Equitation
7. English Equitation Walk Only: Ages 8-19
8. Cloverbud English Walk/Trot: Age 7  
*Exhibitors will receive a Cloverbud ribbon.*
9. Cloverbud English Leadline: Ages 5-7  
*Exhibitors will receive a Cloverbud ribbon.*
10. English Equitation Championship WTC - first and second placings from WTC English Equitation classes are eligible for this class. You do NOT need to register for this class.
11. English Equitation Championship WT - first and second placings from WT English Equitation classes are eligible for this class. You do NOT need to register for this class.

## SECTION 4: 4-H HORSE ENGLISH PLEASURE

- Species Chair reserves the right to split or combine classes as the numbers see fit.
- Exhibitors placed 1st – 6th in each class receive rosette ribbons.

1. English Pleasure: Ages 16-19
2. English Pleasure: Ages 13-15
3. English Pleasure: Ages 8-12
4. English Pleasure Gymkhana - WTC
5. Rookie English Pleasure
6. Novice English Pleasure

## SECTION 5: 4-H HORSE WESTERN HORSEMANSHIP

- Species Chair reserves the right to split or combine classes as the numbers see fit.
- Exhibitors placed 1st – 6th in each class receive rosette ribbons.

1. Western Horsemanship: Ages 16-19
2. Western Horsemanship: Ages 13-15
3. Western Horsemanship: Ages 8-12
4. Western Horsemanship Gymkhana - WTC
5. Rookie Western Horsemanship
6. Novice Western Horsemanship
7. Western Horsemanship Walk Only: Ages 8-19
8. Cloverbud Western Walk/Trot: Age 7  
*Exhibitors will receive a Cloverbud ribbon.*
9. Cloverbud Western Leadline: Ages 5-7  
*Exhibitors will receive a Cloverbud ribbon.*
10. Western Horsemanship Championship WTC - first and second placings from WTC Western Horsemanship classes are eligible for this class. You do NOT need to register for this class.
11. Western Horsemanship Championship WT - first and second placings from WT Western Horsemanship classes are eligible for this class. You do NOT need to register for this class.

## SECTION 5: 4-H HORSE WESTERN PLEASURE

- Species Chair reserves the right to split or combine classes as the numbers see fit.
- Exhibitors placed 1st – 6th in each class receive rosette ribbons.

1. Western Pleasure: Ages 16-19
2. Western Pleasure: Ages 13-15
3. Western Pleasure: Ages 8-12
4. Western Pleasure Gymkhana - WTC
5. Rookie Western Pleasure
6. Novice Western Pleasure

## SECTION 6: 4-H HORSE TRAIL

- Species Chair reserves the right to split or combine classes as the numbers see fit.
- Exhibitors placed 1st – 6th in each class receive rosette ribbons.

1. Trail: Ages 16-19
2. Trail: Ages 13-15
3. Trail: Ages 8-12
4. Trail: Gymkhana – WTC
5. Miniature Horse/Small Equine Trail in Hand (May not compete in any other trail or riding classes)
6. Rookie Trail
7. Novice Trail
8. Walk Only Trail: Ages 8-19
9. Cloverbud Trail: Ages 5-7  
*Exhibitors will receive a Cloverbud ribbon.*



# 4-H ANIMAL EXHIBITS

## SECTION 7: 4-H SPECIAL CLASSES

- *Species Chair reserves the right to split or combine classes as the numbers see fit.*
  - *Exhibitors placed 1st – 6th in each class receive rosette ribbons.*
1. Dressage – WTC (English saddle and attire are allowed. Helmets are required.)
  2. Dressage – WT (English saddle and attire are allowed. Helmets are required.)
  3. Single Hitch Mini/Pony Driving
  4. Single Hitch Draft Driving
  5. Ranch Riding – WTC
  6. Ranch Riding – WT
  7. Reining
  8. Western Riding
  9. Costume Class – WTC
  10. Costume Class – WT
  11. Costume Class – Cloverbud

## SECTION 7: 4-H HORSE SPECIAL CLASSES

- *Species Chair reserves the right to split or combine classes as the numbers see fit.*
  - *Exhibitors placed 1st – 6th in each class receive rosette ribbons.*
1. Pole Bending – WTC
  2. Pole Bending – WT
  3. Pole Bending – Cloverbud
  4. Keyhole – WTC
  5. Keyhole – WT
  6. Keyhole – Cloverbud
  7. Speed & Action – WTC
  8. Speed & Action – WT
  9. Speed & Action – Cloverbud
  10. Indiana Flag Race – WTC
  11. Indiana Flag Race – WT
  12. Indiana Flag Race – Cloverbud
  13. Cloverleaf – WTC
  14. Cloverleaf – WT
  15. Cloverleaf – Cloverbud

## DEPARTMENT 20 – 4-H DOGS

*Species Chair – Gretchen Sauvage*

### DEPARTMENT RULES:

- Exhibitors can obtain a copy of Agility for 4-H Guide from your local 4-H office, the local 4-H website or the Northwest Michigan Livestock Council website.
- No females in season may show.
- Open to youth who belong to a 4-H group.
- All dogs to be exhibited at the Fair must be kept on a leash or crated. All leashes need to be 6 feet in length to show in obedience, made of leather or solid fabric. No chain leashes.
- Copies of DHLPP or DHPP and Rabies shot records need to be current for all dogs 6 months and older which must be given to the 4-H specie person prior to showing.

### DEPARTMENT RULES CONTINUED:

- Members may only show in ONE obedience, showmanship, agility, and rally class. Member may use no more than 2 dogs. No two participants may show the same dog in obedience, showmanship, agility, or rally with the exception of Cloverbuds.
- Any clothing which draws undue attention to one's self, or clothing that distracts other handlers, spectators, or judges, is unacceptable (Example: blue jeans, t-shirts, sweatshirts, halter tops, low cut blouses or sweaters or shorts). Shorts may be worn for agility and rally only and must be mid-thigh length-no exceptions. Skirts need to be knee length. Flat shoes such as tennis shoes should be worn. No sandals, boots, or high heels allowed. Long hair, should be tied back. No clothing with club name and/or personal identification will be allowed. Exhibitors not adhering to dress code will be asked to change or be disqualified.
- Dogs with aggressive behavior or lameness may be excused from showing. Dogs with a physical disability (ex. Loss of an eye or leg) will be allowed to show if a statement of fitness is provided from the veterinarian and should be sent with the vaccination records and registration.
- Cloverbud 4-H members, ages 5-7 years, will have their own class in showmanship, obedience, agility, and rally and they will participate non-competitively. They will not compete beyond these classes.
- Showmanship- First place winners in each class (except Cloverbud) will compete for Grand and Reserve Champion Showmanship. Grand and Reserve Rosettes.
- Rules not listed, the judge will adhere to 4-H and/or AKC rules for all events.

### SECTION 1: 4-H DOG SHOWMANSHIP

- *Species Chair reserves the right to split or combine classes as the numbers see fit.*
  - *Exhibitors placed 1st – 6th in each class receive rosette ribbons.*
1. Cloverbud Showmanship: Ages 5-7  
*Exhibitors receive cloverbud ribbons*
  2. Junior Showmanship Class: Ages 8-11: A or B division  
*A - Division is for youth beginning or having one previous year of showmanship*  
*B - Division is for youth beginning their third or more years of showmanship experience in any venue.*
  3. Intermediate Showmanship Class: Ages 12-15: A or B Division  
*A - Division is for youth beginning or having one previous year of showmanship*  
*B - Division is for youth beginning their third or more years of showmanship experience in any venue.*
  4. Senior Showmanship Class: Ages 16-19: A or B Division  
*A - Division is for youth beginning or having one previous year of showmanship*  
*B - Division is for youth beginning their third or more years of showmanship experience in any venue.*
  5. Platinum Level  
*Must have two years of showing experience and to have placed 1st, 2nd or 3rd three times with no less than 4 exhibitors in class.*

# 4-H ANIMAL EXHIBITS

## SECTION 2: 4-H DOG OBEDIENCE

- *Species Chair reserves the right to split or combine classes as the numbers see fit.*
- *Exhibitors placed 1st – 6th in each class receive rosette ribbons.*
- “A” is for members and dogs that will be competing in their first year. “B” is for members who have competed in “A” previously, or a new handler with a dog who has competed in Obedience previously.
- Qualifying Score- comprised of scores of more than 50% of the available points in each exercise and a final score of 170 points or more.
- In the case of ties, it will be left up to the judge on how he/she wants to break the tie.
- First and second place dogs will qualify for High Scoring Dog Trophy (Grand only) and Grand and Reserve Rosettes.
- Pre-Novice will be on leash with choke, martingale or snap collar.

### 1. Cloverbud Obedience: Ages 5-7

*Exhibitors receive cloverbud ribbons.*

#### Classes 2 & 3: Pre-Novice : Traditional Obedience

2. Pre-Novice A – New dogs and new handler age 8 and older in first year of 4-H dog project.
3. Pre Novice B – Handler and/or dog that have competed in Pre-Novice A previously.

#### Classes 4 & 5: Beginner Novice: Obedience with rally signs

*(Dog shall not have won any AKC Titles, Pre-Novice, Beginner Novice, or a CD)*

4. Beginner Novice A – Dog and handler in first year at Beginner Novice.
5. Beginner Novice B – Experienced dog and/or handler who have competed in Beginner Novice A. Members with or without qualifying scores in Pre-Novice may compete in this class.
6. Novice A – Handler and/or dog that have received 3 qualifying scores (4-H or other) in Pre-Novice or Beginner Novice. A dog that is owned or co-owned by a person who has previously handled or regularly trained a dog that has won a CD title may not enter in the Novice A Class, nor may a dog be handled in this class by such a person. This class involves on/off leash exercise.
7. Novice B – Handler and/or dog that have competed in the Novice-A previously.
8. Graduate Novice A – Handler and/or dog that have competed the Novice level and have received 3 qualifying scores (4-H or other).
9. Graduate Novice B – Handler and/or dog that have experience in Graduate Novice A.
10. Open A – Handler and dog who have completed Graduate Novice and/or received a CD in competition.

## SECTION 3: 4-H DOG AGILITY

- *Species Chair reserves the right to split or combine classes as the numbers see fit.*
- *Exhibitors placed 1st – 6th in each class receive rosette ribbons.*
- Each class is divided into A and B class. A is for members who will be competing at a level for the 1st year. B is for members who have competed in the A division previously or have not received their title or are competing with a new dog in this class.
- At no time during competition is the handler allowed to touch the dog or equipment without being faulted.
- The dog must be at least a year old.
- The dog must wear a buckle collar without tags.
- First and second place dogs will qualify for Grand and Reserve rosettes.
- For safety reasons, the handler and dog must have gone through agility classes in order to compete in the agility events.

### 1. Cloverbud Agility: Ages 5-7

*Exhibitors receive cloverbud ribbons.*

2. Beginners A – A new dog and/or handler in their first year of the 4-H dog project ages 8 or older. All dogs are to be on lead. Vertical jump height for this class shall be 8” and broad jump 16”. Dogs under 9” may do vertical jump of 4” and broad jump of 8”. Handlers will be allowed to jump over the jumps with their dog.
3. Beginners B – Second year dog or handler and dogs who have not obtained a qualifying score in a higher agility level. Vertical jump height for this class shall be 8” and broad jump 16”. Dogs under 9” may do vertical jump of 4” and broad jump of 8”. Handlers will be allowed to jump over the jumps with their dog.
4. Intermediate Agility – For dogs experienced in running off leash. The maximum vertical jump height is 12” and the maximum broad jump is 24” See chart below for dogs less than 11” at withers. Handlers will not be allowed to jump the jumps with their dog. The course will include dog walk and six weave poles (dogs must complete weave poles- no faults for several attempts).
5. Advanced Agility – For dogs that have received their intermediate agility title. This level is done off lead with additional obstacles and jump heights as follow:

Dog's Height at Withers					
	Over 20"	20" to 14"	14" to 11"	11" to 9"	9" & under
<i>Jump Heights</i>	<b>20"</b>	<b>16"</b>	<b>12"</b>	<b>8"</b>	<b>4"</b>
<i>Long Jump Lengths</i>	<b>40"</b>	<b>32"</b>	<b>24"</b>	<b>16"</b>	<b>8"</b>
<i>Max. Table Height</i>	<b>16"</b>	<b>16"</b>	<b>12"</b>	<b>8"</b>	<b>8"</b>
<i>Tire Jump Height</i>	<b>16"</b>	<b>16"</b>	<b>12"</b>	<b>8"</b>	<b>4"</b>

# 4-H ANIMAL EXHIBITS

## SECTION 4: 4-H DOG RALLY OBEDIENCE

- *Species Chair reserves the right to split or combine classes as the numbers see fit.*
- *Exhibitors placed 1st – 6th in each class receive rosette ribbons.*
  - Dogs must be 6 months of age at time of competition.
  - First and second place dogs will qualify for Grand & Reserve rosettes.

1. Cloverbud Rally Obedience: Ages 5-7  
*Exhibitors receive cloverbud ribbons.*
2. Novice A – First year handler and/or dog in Rally.
3. Novice B – Second year dog or handler and dogs who have not obtained a qualifying score in a higher level of Rally Obedience.
4. Intermediate A – Any dog who has Novice Rally Title in 4-H or any other registry. 1st year at this level.
5. Intermediate B – Any dog who have Novice Rally Title and does not have Intermediate Rally Title in 4-H or any other registry.
6. Excellent – Dogs who have an Advanced Rally Title in 4-H or any other registry.
7. Master – Dogs who have Excellent Rally Title in 4-H or any other registry.

## DEPARTMENT 22 –

### 4-H LLAMAS & ALPACAS

*Species Chair – Kathy Easter*  
*Assistant Species Chair – Renee Hobbins*

#### DEPARTMENT RULES:

- Exhibitors must be 8 years or older. Age computed from January 1st of current year.
- Failure of handler to safely handle their animal will result in removal from the class.
- Show attire neat, making sure not to draw undue attention to oneself with exception of costume class - ie, dress shirt/ jeans/khaki pants/dress pants.
- Llamas/Alpacas will arrive by 2:00pm on the first Saturday of fair and will remain until 6:00am the following Sunday.
- Handlers will only be allowed to enter each performance class, novice and advance once using different animals in each class. Cloverbuds may share an animal with an older 4-H member.
- Performance class will require llamas/alpacas to do various obstacles. Handlers and animals will be judged on their ability to work together as well as completion of an obstacle. Advanced consists of an animal placing first in any prior show, otherwise considered Novice.
- AGE DIVISIONS: Juvenile – 5-13 months; Yearling – 13-24 months; Two Year Old – 24-36 months; Adult – 36 months and up.
- Female classes are for fertile, breeding females.
- Male classes are for intact/ 24 months or younger by August 1st.
- Non-breeder classes are for geldings, vasectomized males, and spayed or non-reproductive females that are suitable for other purposes.

#### DEPARTMENT RULES CONTINUED:

- Animals must be under the control of their owner at all times or they will be asked to remove the animal from the grounds for safety of the handler and public.
- Entries shall be removed and pens cleaned by 12pm on the final Sunday of fair.

#### SECTION 1: 4-H LLAMA/ALPACA SHOWMANSHIP

- *4-H age is used as a guide to arrange classes. Species Chair reserves the right to split or combine classes as the numbers see fit. In some cases, exhibitors may be moved based on their experience if necessary to accommodate class sizes.*
- *Exhibitors placed 1st – 6th in each class receive rosette ribbons.*

1. Showmanship: Ages 14-19
2. Showmanship: Ages 8-13
3. Cloverbud Showmanship: Ages 5-7  
*Exhibitors will receive a Cloverbud ribbon.*
4. Grand & Reserve Champion Llama/Alpaca Showmanship  
*– Exhibitors are determined by the judge. You do NOT need to register for this class. Rosettes are awarded to winners. The Grand Champion also receives a medal.*

#### SECTION 2: 4-H LLAMA/ALPACA OBSTACLE COURSE

- *Exhibitor's animals are placed in each class at the discretion of the judge.*
- *Exhibitors placed 1st–6th in each class receive ribbons.*

1. Advanced Animal
2. Novice Animal
3. Cloverbud Obstacle Course: Ages 5-7  
*Exhibitors will receive a Cloverbud ribbon.*
4. Grand & Reserve Champion Llama/Alpaca Obstacle Course - *Exhibitors are determined by the judge. You do NOT need to register for this class. Rosettes are awarded to winners.*

#### SECTION 3: 4-H LLAMA/ALPACA PACK

- *Exhibitor's animals are placed in each class at the discretion of the judge.*
- *Exhibitors placed 1st–6th in each class receive ribbons.*

1. Advanced Animal
2. Novice Animal
3. Cloverbud Pack: Ages 5-7  
*Exhibitors will receive a Cloverbud ribbon.*
4. Grand & Reserve Champion Llama/Alpaca Pack - *Exhibitors are determined by the judge. You do NOT need to register for this class. Rosettes are awarded to winners.*

#### SECTION 4: 4-H LLAMA/ALPACA COSTUME

- *Exhibitor's animals are placed in each class at the discretion of the judge.*
- *Exhibitors placed 1st–6th in each class receive ribbons.*

1. Costume Class: Ages 8-19
2. Cloverbud Costume Class: Ages 5-7  
*Exhibitors will receive a Cloverbud ribbon.*

# 4-H ANIMAL & NON-ANIMAL EXHIBITS

## DEPARTMENT 73 –

### 4-H YOUTH EDUCATIONAL PROJECTS DIFFERENTLY ABLED PROGRAM

*Species Chair – Beth Stephens*  
*Assistant Species Chair – Rosie Belles*

#### DEPARTMENT RULES:

- Differently Abled 4-H Members (youth with special needs) may participate with the assistance from the Differently Abled Program. Special trained advocates work to ensure 4-H members success in showing their project to the best of their ability.

#### SECTION 1: 4-H DIFFERENTLY ABLED SHOWMANSHIP

14. Showmanship

## DEPARTMENT 71 –

### 4-H EXHIBITS IN THE TANNER BUILDING

#### DEPARTMENT RULES:

##### 4-H Club Booth Displays:

- Tanner Building set up occurs the week prior to the fair. Thursday and Friday from Noon-9pm and Saturday from 9am to 1pm. All displays must be completed NO LATER than 1pm on Saturday.
- All active 4-H clubs from Antrim, Benzie, Grand Traverse, Kalkaska, and Leelanau counties are eligible to participate.
- Each 4-H club must design and display a sign stating the name of the club in their booth display.
- Exhibits must be within the club's assigned area, and clubs may only be assigned one booth space (5.5' wide x 6' deep).
- Best 4-H Club Booth Display award is based on 4-H member participation, appropriate theme, originality, and creativity. First, second and third place awards will be given.
- Judging of the booth displays will occur between 2pm and 6pm on Saturday. Club booths are judged as a whole unit. The winning booths will receive a 1st, 2nd or 3rd place ribbon. The first place display will receive the first place banner and \$100, second place will receive \$75 and third \$50 in gift cards and will be provided at the awards celebration on Saturday of Fair to the top three booth display winners.



#### Exhibitor Rules\*:

- Exhibitors may exhibit as part of a club booth display, and/or participate in an interview/demonstration. Cloverbuds will earn participation ribbons for interviews and demonstrations.
- 4-H booth entries are to be the work of the exhibitors and a current year project.
- Exhibitors may choose to provide a demonstration about a project they have completed in the past year. This may or may not be a part of their club booth display. Demonstrations are to be no more than 15 minutes. Ribbons (Cloverbud participation, 1st, 2nd, and 3rd place) will be awarded in age groups (Cloverbud, 8-11, 12-15, and 16-19) for demonstrations and interviews.
- Exhibitor Project Demonstrations can be completed in the Tanner Building on Monday of Fair, between 11am and 3pm.

\*Special note: there are no longer 4-H independent judged projects in the Tanner Building. If 4-H youth would like to have independent projects judged, please register them with the Evelyn Heim building (using the online Fair registration form).

#### Interviews:

- Any active 4-H member eligible for the fair may register for an interview. 4-H Exhibit Barn Interviews will be held on Monday from 11am-3pm.
- Judges will award 1st, 2nd, and 3rd place ribbons for youth in the 8-11, 12-15, and 16-19 age groups.
- Cloverbuds may interview for a participation ribbon.

#### Clover Award:

- Youth ages 10-19 from Antrim, Benzie, Grand Traverse, Kalkaska, and Leelanau counties are eligible to apply for the Clover Award. Applications are due the Wednesday before fair.
- The three Clover Award finalists, chosen by committee based on their written applications, will be interviewed on Monday of fair between 11am and 3pm (by appointment).
- The Clover Award (\$100 gift card, certificate, and ribbon) will be presented at the 4-H Awards Ceremony held on the final Saturday of Fair.

#### SECTION 1: 4-H CLUB BOOTH DISPLAY

*Objective:* To provide an opportunity to showcase what the club has done in the past 4-H year. This may include photos, posters, reports, narratives, articles, crafts, and other projects made by the youth. Each year there is a theme shared by the Tanner Building Committee in the information flyer.

#### SECTION 2: 4-H INTERVIEW AND DEMONSTRATIONS

*Objective:* To provide an opportunity for individual 4-H'ers to discuss their experiences in 4-H and/or a project(s) they have completed in 4-H. This will allow 4-H youth to practice public speaking, interview, and demonstration skills.

---

# SERRA

TRAVERSE CITY

---



**14 BRANDS | 1 GREAT EXPERIENCE**

---

[WWW.SERRATRAVERSE CITY.COM](http://WWW.SERRATRAVERSE CITY.COM)

231-486-0899

# 2023 4-H LIVESTOCK AUCTION BUYERS

4 Front Credit Union	Edgewater Concrete	Louies Meats	Slabtown Construction
45th Property & Power	Ellsworth Farmers Exchange	Lucky 7 Dairy	Smart Building Services
7 Brew	Endeavor Ag - Energy	Magnum Hospitality	Spence Brothers Construction
Absolute Building Solutions, LLC	Erickson Inc.	Mark Holmes	Springfield Inc.
Ace Hardware	Falcon Roofing	Martin & Valerie Cotanche	Square Deal Country Store
Adcock Nemeskal Accounting	Farm Bureau Insurance -	McGough's Inc.	St. Francis High School
Advanced Insulation Systems	Camp Agency	Michael Baldinger	Star Australian Shepherds
Advantage Electric	Federal Broach & Machine	Michigan Health & Wellness	Stein Motors
Al & Lynn Henning	Flees Enterprise	Mike & Chris Barley	Stillwater Energy
All Automotive	Floating Stone Farms	Miller Energy Company	Stockfish Farms, LLC
Alpers Excavating, Inc.	Frankfort Pines Assisted Living	Miller Investment Company	Story Roofing
AMP Consulting	Gary Ingersoll	Molon Asphalt	Suger View Farm
B&Z Well Drilling	Genesis Plumbing Systems	Molon Excavating	Sullivan Family Farms
Barlow & Associates	George Newman	Murchie's Drywall	Sunshine Fields Children Center
Baywest Animal Clinic	Gero's Plumbing & Heating	Nicole & Mark Wade	Team Elmer's
Bella Concrete Construction	Go Go SqueeZ	Nicole Wares	Team Gibbys Concessions
Ben Brower	Grace Motor Mall	North Bay Kitchen & Bath	Teddy Bear Daycare & Preschool
Bill & Lynda Fleet	Grand Traverse Diesel Service	Northbound Construction Services LLC	Long Lake LLC
Blain's Farm & Fleet	Grand Traverse Family Chiropractic	Northern Acres Kennel	The Hayloft
Blarney Castle Oil	Grand Traverse Pallet	Northern Plumbing & Heating	The Jeremy Wolf Foundation
Broad Farms - Butch Broad	Gray's Excavating, Inc.	Northern Waves Hair Salon, LLC	The Paul & Francis Johnson Foundation
Brooks Tree Service	Great Lakes Well Repair	Northland Foods	Tony Taylor
Browne's Electrical	Greenstone Farm Credit	Northwestern Michigan Fair Association	Top Line Electric
Buckley Land & Cattle	Heather Cade	Nutrien Ag Solutions	Tractor Supply Co.
Burritts Fresh Market	Homestead Construction	Olds Brother Maple Syrup	Traverse City KOS
Casey Noonan	Honee Bear Canning	Olds Paradise Farms	Traverse City Meijer
Casey's Excavation	Honor Bank	Oleson's Farm Fresh Markets	Trend Window & Design
CC Power	Houdek's Bathroom Trailers	Outback Steakhouse	Twin Bay Docks
Cherry Capital Pet Hospital & N. M. Community Pet Center	Hubbell Law Offices	Pack Family	Wagner Farms LLC
Cherryland Electric Co-op	Hutson John Deere	Padnos	Walton Contracting
Coldwell Banker	Intrust CPA	Pendergast Farms	Warren Bailey
Concrete Service, Inc.	Isenhardt Electric	Pepsico	West Bay Exploration
Cornerstone Excavation	J & S Hamburg on South Airport	Pioneer Diesel	Wheelock & Sons Welding, Inc
Culver Meadows	Jack Halligan	Poolside, LLC	Wilkins Farm
D & W Mechanical	Jacks Auto Sales	Racer Seismic Services, LLC	Williams & Bay Pumping
Dairy Lodge	Jade Tool	Raschi Exteriors	Portable Restrooms
Dan Jr & Gale Bristol	Janet Thompson Bardenhagen	Reece Canfield	Wimsatt Building Materials
David & Bailey Noonan	Jason & Amy Nagley	Roger & Beth Noonan	Wolf Wellness
David & Sandra Noonan	Jason & Gwendolyn Neumann	Roger Hubbell	Wolverine Gas & Oil
David & Debbie White	Jen & Evan Davis	Rolling Meadows Farm	Woodhams Farms
David & Emily Dreves	Jenny Groseclose	Rose Beller	Zientek Swine Farm
David Webster Construction	Jillian Barry	Rosema Holdings	ZZ Distribution, LLC
Dawn's Fresh Catering	Jocelyn Schoenlein	Roto-Rooter	
Deborah Canfield	JTZ Construction	Ryan Noonan	
Diane O'Hara	Just Trucks	Sally Reed	
Distinct Electric	Kadlec Associates	Schaffer Farms	
Donald Hayden	Kate's Sweet Shop & Mini Golf	Scott Dalstra	
Don's Drive In	Kegan Cogger	Scott Leeball	
Double K Services	Kelly Metcalf	Security Sanitation/Belanger	
Doug Gerard Rextroat	Kevin Bargy	Septic	
Dr. Dan Sarya- Sarya	Kingsley Lumber	Send Brothers Feed	
Orthodontics	Lake Ann Sand & Gravel	Sharon Case	
Dr. Ronald Lints	Langes Painting & Wallcovering	Shoreline Power Services	
Orthodontics	Lemcool Heating & Cooling	Simmer Land Surveying	
Dreves Brothers LLC	Lindsey Farms		
Ebels	Local Union 85 Plumbers & Pipefitters		
	Long Acre Farms		

**NORTHWESTERN  
MICHIGAN  
FAIR**

---

**FORMS**

**2024**

*Homemaker of the Year*

*Junior Homemaker of the Year*

*Annual Membership*

*Release Agreement*

*2024 Exhibit Registration*

*Worksheet*

*Fair Campsite Reservation*

*Camping Dog Registration*

*Golf Cart Information*

Northwestern Michigan Fair – 2024 Homemaker of the Year  
Deadline for entry: July 14, 2024

FIRST PRIZE: \$75.00 ALONG WITH A CROWN & SASH



**2024  
HOMEMAKER OF  
THE YEAR  
Laurie Ashley**

**RULES FOR SELECTING HOMEMAKER OF THE YEAR:**

1. Exhibitor must have a variety of entries in 3 of the 5 divisions:  
(Please check your entries.)  
 Needlework       Culinary Arts       Photography  
 Arts & Crafts (Folk Arts)       Canning & Preserves
2. Must have a good showing of winning awards
3. May not be named Homemaker of the Year in previous consecutive years.
4. The Northwestern Michigan Fair Homemaker of the Year will represent us in the State Homemaker Contest in 2025 at TBD.
5. Applicants are requested to come to the Evelyn Heim Building on Monday, August 5, 2024 at 1:00pm for an interview. Homemaker of the Year will be announced at 3:00pm.
6. The Northwestern Michigan Fair and Homemaker Committee reserve the right to not accept an application if they deem an applicant not an appropriate representative of the Homemaker of the Year Program and they NWMF organization.

**Name:** \_\_\_\_\_

**Address:** \_\_\_\_\_ **City/State/Zip:** \_\_\_\_\_

**Phone Number:** \_\_\_\_\_ **Entry Number:** \_\_\_\_\_

**No. of years participation in the Fair:** \_\_\_\_\_ **Email:** \_\_\_\_\_

PLEASE COPY AND ANSWER QUESTIONS ON A SEPARATE PIECE OF PAPER

1. Describe your involvements in the Fair. Include departments entered and awards won.
2. Describe volunteer participation/activities (school, church, community, organizations, etc.)
3. How would you describe the title “Homemaker”?
4. What aspects of homemaking do you enjoy and why?

**Mail Completed Form to:  
Northwestern Michigan Fair  
3606 Blair Town Hall Rd.  
Traverse City, MI 49685**





## Northwestern Michigan Fair-2024 Junior Homemaker of the Year

Deadline for entry—July 14,2024



### Rules for selecting Junior Homemaker of the Year

Youth exhibitor ages 5-17

1. Exhibitor must enter in 3 of the 5 divisions: \_\_Needlework  
\_\_Culinary Arts \_\_Photography \_\_Arts and Crafts(Folk Arts)  
\_\_Food Preservation
2. Must have a good showing of winning awards
3. May not be named Junior Homemaker in previous consecutive years.
4. The Northwestern Michigan Fair Junior Homemaker will represent of the State Competition in TBD in 2025.
5. Applicants are requested to come to the Evelyn Heim Building for interviews at designated times on Wednesday, August 7, 2024 . The winner will be announced at 3pm.

Name\_\_\_\_\_

Address\_\_\_\_\_City/State/Zip\_\_\_\_\_

Phone Number\_\_\_\_\_Number of Entries\_\_\_\_\_

Number of years of participation\_\_\_\_\_

### Please copy and answer questions on a separate piece of paper.

1. Describe your involvements with the Fair
2. Describe volunteer participation/activities(school/church/organizations/etc.)
3. Describe your favorite aspect of Homemaking

***Mail Completed Form to:  
Northwestern Michigan Fair  
3606 Blair Town Hall Rd.  
Traverse City, MI 49685***



# Northwestern Michigan Fair Association



## Annual Membership Application Annual Membership Pass

Good from January 1, 2024 - December 31, 2024 • Has to be renewed annually

### **COST OF MEMBERSHIP: \$15.00**

Membership Includes: Entry to the Fair during Fair week, Voting rights at the Annual Meeting and any Special Meeting.

APPLICANTS MUST BE 18 YEARS OF AGE

**Please Print**

\*Full Name (First, M.I., Last) \_\_\_\_\_

\*Address: \_\_\_\_\_ City/State/Zip: \_\_\_\_\_

\*Phone Number: \_\_\_\_\_ Email: \_\_\_\_\_

\*Date of Birth: \_\_\_\_\_

*\*Fields are required to be filled out completely*

APPLICANTS ARE RESPONSIBLE FOR NOTIFYING THE NORTHWESTERN MICHIGAN FAIR OF ALL INFORMATION CHANGES. PLEASE KEEP CARD IN A SAFE PLACE AS THERE IS A \$5.00 FEE FOR REPLACEMENTS.

\_\_\_\_\_  
Signature of Applicant

\_\_\_\_\_  
Date

***Make checks payable to: Northwestern Michigan Fair***

***Mail check and complete form to :  
Northwestern Michigan Fair,  
Attn: Secretary Tom Looks  
3606 Blair Town Hall Rd.  
Traverse City, MI 49685***

FOR OFFICE Use ONLY:

Card Number Issued: \_\_\_\_\_ Entered into Database: \_\_\_\_/\_\_\_\_/\_\_\_\_



# Northwestern Michigan Fair RELEASE, INDEMNIFICATION, AND HOLD HARMLESS AGREEMENT

In consideration of participating in \_\_\_\_\_ [activity](examples being: Horse shows, dog shows, animal clinics, Fair Week, Screams in the Dark, etc.), and for other good and valuable consideration, I hereby agree to release and discharge from liability arising from negligence **Northwestern Michigan Fair** [name of insured business] and its owners, directors, officers employees, agents, volunteers, participants, and all other persons or entities acting for them (here-inafter collectively referred to as "Releasees"), on behalf of myself and my children, parents, heirs, assigns, personal representative and estate, and also agree as follows:

1. I acknowledge that \_\_\_\_\_ [activity] (see examples listed in previous paragraph) involves known and unanticipated risks which could result in physical or emotional injury, paralysis or permanent disability, death, and property damage. Risks include, but are not limited to, [actions that might result in injury]; medical conditions resulting from physical activity; and damaged clothing or other property. I understand such risks simply cannot be eliminated, despite the use of safety equipment, without jeopardizing the essential qualities of the activity.
2. I voluntarily assume full responsibility for any risk, known or unknown, of loss, property damage or personal injury, including permanent disability or death and/or exposure to illness or disease (communicable or otherwise), that I may sustain, or any loss or damage to my property, as a result of my engagement in the activities and/or by entering the applicable premises, whether due to the active or passive negligence of the Releasees, negligence, fault or misconduct of any kind on my part, or otherwise. I acknowledge that an inherent risk of exposure to COVID-19 (or other communicable or contagious disease or illness) exists in any public place where people are present. By visiting any premises contracted with or utilized by the Releasees, I voluntarily assume all risks related to exposure to COVID-19 and/or any other contagious or communicable illness or disease. I hereby consent to permit the Northwestern Michigan Fair to take such steps as it or its subcontractors or providers deem appropriate to minimize risk, including but not limited to having my temperature checked. I certify that I have not in the past fourteen (14) days (a) been asked to self-quarantine; (b) returned from international travel (outside of the United States); (c) knowingly had contact with any person diagnosed with COVID-19 or being evaluated for COVID-19; or (d) had a fever of 100.4 degrees or higher or any other symptoms of COVID-19. Participant agrees to socially distance (at least 6-feet) to the greatest extent possible while participating in the Activities.
3. I expressly accept and assume all of the risks inherent in this activity or that might have been caused by the negligence of the Releasees. My participation in this activity is purely voluntary and I elect to participate despite the risks. In addition, if at any time I believe that event conditions are unsafe or that I am unable to participate due to physical or medical conditions, then I will immediately discontinue participation.
4. I hereby voluntarily release, forever discharge, and agree to indemnify and hold harmless Releasees from any and all claims, demands, or causes of action which are in any way connected with my participation in this activity, or my use of their equipment or facilities, arising from negligence. This release does not apply to claims arising from intentional conduct. Should Releasees or anyone acting on their behalf be required to incur attorney's fees and costs to enforce this agreement, I agree to indemnify and hold them harmless for all such fees and costs.
5. I represent that I have adequate insurance to cover any injury or damage I may suffer or cause while participating in this activity, or else I agree to bear the costs of such injury or damage myself. I further represent that I have no medical or physical condition which could interfere with my safety in this activity, or else I am willing to assume – and bear the costs of – all risks that may be created, directly or indirectly, by any such condition.
6. In the event that I file a lawsuit, I agree to do so solely in the state where Releasees' facility is located, and I further agree that the substantive law of that state shall apply.
7. I agree that if any portion of this agreement is found to be void or unenforceable, the remaining portions shall remain in full force and effect.

By signing this document, I agree that if I am hurt or my property is damaged during my participation in this activity, then I may be found by a court of law to have waived my right to maintain a lawsuit against the parties being released on the basis of any claim for negligence. I have had sufficient time to read this entire document and, should I choose to do so, consult with legal counsel prior to signing. Also, I understand that this activity might not be made available to me or that the cost to engage in this activity would be significantly greater if I were to choose not to sign this release, and agree that the opportunity to participate at the stated cost in return for the execution of this release is a reasonable bargain. I have read and understood this document and I agree to be bound by its terms.

\_\_\_\_\_  
**Signature** \_\_\_\_\_  
**Print Name**

\_\_\_\_\_  
**Address:** **City/State/Zip:** **Phone Number:**

PARENT OR GUARDIAN ADDITIONAL AGREEMENT  
(Must be completed for participants under the age of 18) \_\_\_\_\_  
**Date**

In consideration of \_\_\_\_\_ (PRINT minor's names) being permitted to participate in this activity, I further agree to indemnify and hold harmless Releasees from any claims alleging negligence which are brought by or on behalf of minor or are in any way connected with such participation by minor.

Parent or Guardian Print Name /Date \_\_\_\_\_  
(If notarization is necessary, please sign & stamp this side of form.)



# Northwestern Michigan Fair

## EXHIBITS & CLASS REGISTRATION FORM



**ANIMAL REGISTRATIONS WILL NOT BE ACCEPTED AFTER JULY 1, 2024**

**NON-ANIMAL REGISTRATIONS WILL NOT BE ACCEPTED AFTER JULY 14, 2024**

ALL Registrations will be online. PRINTED OR MAILED REGISTRATIONS WILL NOT BE ACCEPTED. Please visit [www.northwesternmichiganfair.net](http://www.northwesternmichiganfair.net) for more information.

4H Club: \_\_\_\_\_

4H Leader: \_\_\_\_\_

Exhibitor Name: \_\_\_\_\_

Date of Birth: \_\_\_\_\_

Address: \_\_\_\_\_

City/State: \_\_\_\_\_

ZIP: \_\_\_\_\_

Parents Name(s) if exhibitor is a minor: \_\_\_\_\_

Contact Number: \_\_\_\_\_

Contact Number: \_\_\_\_\_

	DEPARTMENT NUMBER & NAME	SEC.	CLASS	CLASS DESCRIPTION
	Example: Department 7 - Goats	1	4	Senior Goat Showmanship (Ages 16 and older)
1				
2				
3				
4				
5				
6				
7				
8				
9				
10				

**LINE ONE: 1-10 ITEMS:** AMOUNT DUE: \$5.00

**MANDATORY:** Exhibitors shall read and abide by the rules within this Premium Book including General Rules, MDA Health Requirements for Livestock Exhibited in Michigan, IAFE National Code of Ethics (located within Rules and Guidelines), NWMI Fair Code of Conduct, NWMI Fair Livestock Code of Ethics and release of all liability statements.

Please list the names and numbers of any other relatives on the grounds:

	RELATIVE'S NAME	PHONE NUMBER
1		
2		
3		

# NWMF REGISTRATION WORKSHEET

*COST TO REGISTER FOR CLASSES IS \$5.00 FOR EVERY 10 ITEMS*

	DEPARTMENT NUMBER & NAME	SEC.	CLASS	CLASS DESCRIPTION
	Example: Department 7 - Goats	1	4	Senior Goat Showmanship (Ages 16 and older)
11				
12				
13				
14				
15				
16				
17				
18				
19				
20				

**LINE TWO: 11-20 ITEMS:** AMOUNT DUE: \$10.00

	DEPARTMENT NAME & NO.	SEC.	CLASS	CLASS DESCRIPTION
21				
22				
23				
24				
25				
26				
27				
28				
29				
30				

**LINE THREE: 21-30 ITEMS:** AMOUNT DUE: \$15.00

**HORSES ONLY** PLEASE PROVIDE THE FOLLOWING INFORMATION IF YOU ARE BRINGING HORSES TO THE FAIR

Number of Horses: \_\_\_\_\_ Horses Name(s): \_\_\_\_\_

Are you sharing a Horse? Circle one: YES NO With whom are you sharing a Horse with?: \_\_\_\_\_

\_\_\_\_\_

Coggins Number(s): \_\_\_\_\_

**All Animal Exhibitors MUST agree to the Northwestern Michigan Fair Animal Health Plan. Additional information can be found at [northwesternmichiganfair.net](http://northwesternmichiganfair.net).**

# NWMF ENTRY FEES WORKSHEET

ENTRY FEES		TOTAL AMT. DUE
Horse Box or Standing Stall		x \$20.00 per stall
Open Horse Show, per class		x \$4.00 per class
Draft Horse Show		x \$5.00 per class
Cattle		x \$15.00 per animal
Cow with nursing calf		x \$15.00 per pen
Sheep		x \$10.00 per animal
Goat		x \$10.00 per animal
Dairy Feeder, Junior Beef		x \$15.00 per animal
Fowl		x \$2.00 per animal
Cavies		x \$2.00 per animal
Rabbits		x \$2.00 per animal
Alpaca		x \$15.00 per animal
Llama		x \$15.00 per animal
Swine		x \$15.00 per animal
Arnold Amusement Mega Band <i>(Must be purchased prior to the start of fair week)</i>		x \$100.00
Adult Weekly Pass		X \$20.00
Youth Weekly Pass <i>(Not associated with 4-H or Sibling armbands)</i>		x \$9.00
Camping Fee		x \$165.00
Annual Membership Fee <b>1/1/2024 to 12/31/2024</b>		x \$25.00
<b>Donation to NWM Fair</b> - if you have a specific place you would like to have your donation go to please specify. (IE: bathrooms, one of the barns, one of the memorial funds, etc.):		
<b>Housing &amp; Class Fees: Exhibit Fees from line 1,2,or 3, etc. on the registration form</b>		
<div style="border: 1px solid black; padding: 2px; display: inline-block;">                     A portion of the stall fees go to barn upkeep.                 </div>		
		<b>GRAND TOTAL</b> \$

**\* NO REGISTRATION FEES REFUNDED**

**PAYMENT INFORMATION** - Cash, Money Order, Checks, or Credit cards accepted. Make checks and money orders payable to Northwestern Michigan Fair. Payment must be paid in full for entry to be processed. For Credit Card payment please fill in all information below (filling out this information gives us permission to charge your credit card for payment.) There will be a \$35.00 NSF Fee for returned checks.

**REMINDER: All registrations must be completed online. PRINTED OR MAILED REGISTRATIONS WILL NOT BE ACCEPTED. Please visit [www.northwesternmichiganfair.net](http://www.northwesternmichiganfair.net) for more information.** The registration worksheet forms included in this Premium Book are to assist with your planning.

(Limited to Livestock Exhibitors,  
Superintendents, Fairboard, 4-H Leaders,  
4-H Livestock Council, Fair Employees)

## CAMPSITE REGISTRATION

**DEADLINE: July 1, 2024**

Mail to: Northwestern Michigan Fair 3606 Blair Town Hall Road Traverse City, MI 49685	4-H Leader and Phone #	4-H Club												
NAME:														
Home Phone:		Cell #												
Name of Exhibitor(s) and siblings:  _____														
<table style="width: 100%; border: none;"> <tr> <td style="width: 33%; border: none;">Type of Camping Unit:</td> <td style="width: 33%; border: none;"></td> <td style="width: 33%; border: none;">Size of Camping Unit:</td> </tr> <tr> <td style="border: none;">Motor Home _____</td> <td style="border: none;">Truck Camper _____</td> <td style="border: none;">(include length, width, including any slide outs)</td> </tr> <tr> <td style="border: none;">5<sup>th</sup> Wheel _____</td> <td style="border: none;">Tent _____</td> <td style="border: none;">_____</td> </tr> <tr> <td style="border: none;">Trailer _____</td> <td style="border: none;">Pop-up _____</td> <td style="border: none;">_____</td> </tr> </table>			Type of Camping Unit:		Size of Camping Unit:	Motor Home _____	Truck Camper _____	(include length, width, including any slide outs)	5 <sup>th</sup> Wheel _____	Tent _____	_____	Trailer _____	Pop-up _____	_____
Type of Camping Unit:		Size of Camping Unit:												
Motor Home _____	Truck Camper _____	(include length, width, including any slide outs)												
5 <sup>th</sup> Wheel _____	Tent _____	_____												
Trailer _____	Pop-up _____	_____												

**Camping Rules and General Information:**

- \* Camping Fee is \$165.00 per unit per site, limit 1 unit per site for all types of units. **NO CAMPFIRES ALLOWED.**
- \* No water hook-up, limited electrical service, A/C is available **ONLY** in campsites 1-133.
- \* **NO** bikes, skateboards, roller blades, the week before and the week of Fair.
- \* There must be a Parent or Guardian on the grounds for all minors.
- \* Any minors under the influence of alcohol or drugs will be reported to the Sheriff’s Department and prohibited from returning to the Fairgrounds.
- \* Excessive usage of any alcohol by an adult will not be tolerated. You will be asked to leave.
- \* All Campers must be registered, including Superintendents, 4-H Specie Chairs, Livestock Officers, Fair Directors, and any Fair Employees.
- \* All Units **will** have Families Last Name and Club visibly posted.

**Campsite forms must be filled out completely. Failure to do so may result in you not camping.  
No Refunds issued unless a written request received two weeks prior to the start of Fair.**

All dogs must be registered with the Fair office. All Dogs are to be kept at your campsite and on a lead.

When you take your dog out you are required to clean up after the dog.

Dogs are not allowed in the barns (some exceptions).

Dogs are not allowed in the food court (exception Service Dogs).

Any complaints you will be asked to take your Dog home.

**Camper Placement:** Wednesday 7/31, Thursday  
8/1, Friday 8/4 4:00pm – 9:00pm

Karen Zenner: Chairperson  
Jill Duell: Co-Chair

**Tent Placement:**  
Friday 8/4 4:00p – 9:00pm

I have read and understood the above information:

Sign: \_\_\_\_\_ Date: \_\_\_\_\_

Date Received: \_\_\_\_\_ Paid: \_\_\_\_\_ Received by: \_\_\_\_\_ Copied: \_\_\_\_\_



# Northwestern Michigan Fair

## Camping Dog Registration Form



*THIS FORM IS FOR DOGS STAYING ON THE GROUNDS WITH CAMPERS ONLY.*

PLEASE INCLUDE A COLOR PICTURE OF YOUR DOG(S)

**Pet Name:** \_\_\_\_\_

**Owner's Name:** \_\_\_\_\_

**Breed:** \_\_\_\_\_ **Color(s):** \_\_\_\_\_

**Weight:** \_\_\_\_\_ **Age:** \_\_\_\_\_

**Male:** \_\_\_\_\_ **Female:** \_\_\_\_\_ **Cell Phone #:** \_\_\_\_\_

**MIID#/Microchip** \_\_\_\_\_

- All participants must provide dog's **proof of vaccinations** from your veterinarian.
- All dogs must remain on leash when walking and lead must be no more than 6ft. in length and in control of owners at all times. Dogs must be on a lead no longer than the width of the campsite as to not bother your neighbors. Keep dogs in camp. NO dogs (exception service dogs) are allowed in the food court, the barns (exception of signage for the barns) or in the Grandstand/Pitareas.
- Owners are expected to clean up after their own pet(s).
- If the Fair receives any complaints like but not limited to excessive barking the owner must remove the dog from the grounds.
- Aggressive behavior will not be tolerated and you will be asked to remove your dog(s) from the Fairgrounds immediately.
- You are responsible for your dog(s) and their actions the NWMF is not responsible for any damage or injury from your dog(s).
- Dogs must have collar and identification tags on.

I hereby forever release, discharge and hold harmless NWMF, it's employees and representatives, from any and all liabilities, claims, demands or causes of action that I may hereafter have any and all loss, damage or injury I sustain to my person, property, or both, including but not limited to liabilities, claims, demands or causes of action for attorneys fees and litigation expenses, that arise out of being on the Northwestern Michigan Fair Grounds, including but not limited to losses cause by the passive or active negligence of the released parties.

\_\_\_\_\_  
**Signature**

\_\_\_\_\_  
**Date**



# GOLF CART REGISTRATION INFORMATION

---



## Northwestern Michigan Fair *Golf Cart/UTV Registration Rules*

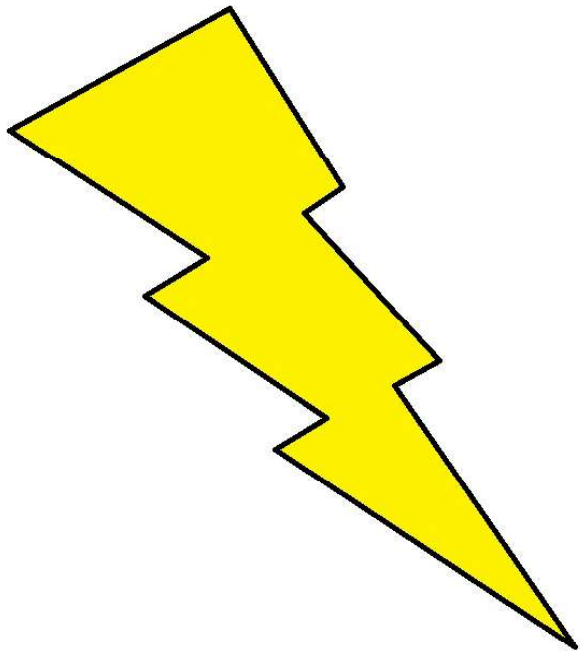


**REGISTRATIONS AND INSPECTIONS WILL BE HELD ON SATURDAY AUGUST 3RD, FROM 8PM TO 10PM. FEES WILL BE COLLECTED AT THIS TIME. REGISTRATION COST IS \$75.**

For the safety of all fairgoers the following rules are in effect when the vehicle is unloaded at the fairgrounds. With everyone's cooperation we can continue the convenience of using golf carts/UTVs during fairweek:

1. Only campers in the north campground and campers with a valid handicap permit from the State of Michigan are permitted to have golf carts/UTVs.
2. Handicap permit holders must be present on the cart while it is in motion. Registered handicap golf carts/UTVs are allowed to go near the barns, but are not allowed inside the barns, concession area, or to enter the midway.
3. Hours of operating golf carts/UTVs are between 6am - 11pm. (Fair carts excluded).
4. No carts/UTVs are allowed on Zeke's Way. Carts/UTVs shall stay in the north campground, north campground parking lot, and on the road between the campground and cart corral next to the Junior Beef barn. Carts/UTVs must be parked at the cart corral next to the Jr. Beef barn. No carts/UTVs are permitted beyond this point. (Fair carts excluded).
5. One person per seat in a cart/UTV. Each person must be seated at all times.
6. No driving carts/UTVs under the influence of drugs or alcohol. Also no open intoxicants will be allowed. NO EXCEPTIONS.
7. All carts/UTVs must have mounted or fixed working headlights to be on grounds. The rear of the cart/UTV must have at least 2 inches of affixed reflective product or working tail lights. No single seated or modified vehicles will be allowed. All those registering carts/UTVs must possess an insurance policy that provides \$300,000 liability insurance coverage for operation of the vehicle on the fairgrounds. The written document of this coverage must be submitted when the vehicle is registered.
8. Driver must have a valid driver's license to operate cart/UTV and be in the operator's possession when operating.
9. All carts/UTVs must be present at the fair office on Saturday, August 3rd from 8pm - 10pm. Bring proof of insurance, handicap permit if applicable and valid driver's license. Carts/UTVs will be inspected for working headlights, tail lights or reflective product, quiet exhaust and working brakes. If carts/UTVs pass inspection, the fair staff will place handicapped stickers when applicable on the front and back of the cart/UTV and a mandatory NWMF registration sticker on the front.
10. Limit 1 cart/UTV per campsite. (Fair carts excluded).
11. At all times carts/UTVs must maintain a safe operating speed, not to exceed 5 ½ mph. (Fair carts excluded in case of emergencies)
12. NWMF reserves the right to refuse registration of any golf cart/UTV.
13. No recreational or sightseeing usage allowed.
14. Golf carts/UTVs must be operated in a safe and orderly manner.

**VIOLATORS WILL HAVE THEIR CARTS/UTVS IMPOUNDED FOR THE DURATION OF THE FAIR AND WILL BE RETURNED SUNDAY MORNING AUGUST 11TH AT 8 A.M. NO EXCEPTIONS! NO REFUNDS.**



**BROWNE'S  
ELECTRICAL  
SERVICE,  
INC**

**\*RESIDENTIAL & COMMERCIAL**

**\*LICENSED & INSURED**

**PHONE: 231-944-5750**

**EMAIL: [browneselectricalservice@gmail.com](mailto:browneselectricalservice@gmail.com)**

**\*\*PROUD SUPPORTER OF THE NWMF\*\***

*A family owned & operated business since 1994*

# Culver Meadows

For Specials & To  
Take A Virtual Tour,  
Visit:  
[culvermeadows.com](http://culvermeadows.com)



Senior  
Living  
231-943-9430

- Medical Team
- NPalliative
- Total Case Management Available
- Located in Traverse City
- Near Munson & Shopping
- In Home Care, Physical,  
Occupational & Speech Therapy
- Dietary Management • Podiatrist
- Medication Management
- Homemade Nutritional Meals
- Whole Building Generator
- Memory Care • Hospice Care
- ALL Levels of Care Provided
- Long Term Care Insurance Accepted

---

*Specializing in Alzheimer & Dementia Care*

---

**Call today**

Trina Jewett

231-633-5840

[trina@culvermeadows.com](mailto:trina@culvermeadows.com)

Administrator

231-633-9430

[administrator@culvermeadows.com](mailto:administrator@culvermeadows.com)



*“Your Home Away From Home”*



# Actron Steel

2341 Molon Drive Traverse City, MI  
(4/10 mile south of S. Airport Rd. off of Cass Rd)



## FULL SERVICE WAREHOUSE

ANGLES



H.R. BARS



ROUNDS



SQUARES



SQUARE TUBING



RECTANGULAR TUBING



PIPE



EXPANDED METAL



### VARIOUS METHODS OF HEAVY PLATE PROCESSING

Computerized Plasma Cutting  
Sheet & Plate Shearing

### VARIOUS METHODS OF FORMING

230 Ton Press Brake  
1/4'x8' Capacity TriRoller  
Coping & Forming

CHANNELS



I BEAMS



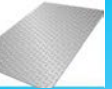
W-FLANGE BEAMS



TEES



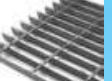
FLOOR PLATE



CONCRETE RE-BARS



BAR GRATING



CONTINUOUS HINGES



*Sales & Service for All-  
Contractors, Businesses, & Individuals  
Custom Fabrications and Structural Steel*

### LARGE INVENTORY

- ★ Common materials & sizes in stock.
- ★ Most special orders available in days
- ★ Random length drop bins at discount prices

**NO PROJECT  
TOO SMALL OR  
TOO LARGE**

**FREE QUOTATIONS ON ANY SIZE PROJECT**  
*by phone, fax, e-mail, or stop in!!*

**Phone: 231-947-3981 • Fax: 231-947-2961**

**Email: [actron@actronsteel.com](mailto:actron@actronsteel.com)**

We have our own delivery trucks for any order - large or small.

**Business Hours: Monday - Friday 7:30am - 4:30pm**

*Special Appointments available*